

# DLHONLINE

*Your partner in safer lifting and handling*



## LIFTING DAVITS 44 PAGE GUIDE

*Updated 2022*

# DLHONLINE Lifting Davits

## Overview

This comprehensive guide to lifting davits has been compiled to help you to select the right lifting davit for your application. However, expert advice is always available from our sales team – by telephone: 0161 223 1990 or by email: [sales@dale-lifting.co.uk](mailto:sales@dale-lifting.co.uk)

When people think of lifting davits they generally consider them primarily used on boats and ships for lifting and lowering small craft. But, in addition to marine uses, industrial lifting davits cover a much wider range of uses in portable and stationary applications in many other locations including tall structures, roof tops, workshops, vehicles, utility works and below ground.

Standard lifting davits are available with manual or powered hoist and or winch lifting apparatus. These are mostly designed solely for lifting goods and machinery. And are not therefore suitable for carrying people. However, certified man riding models are also available for suspension and rescue requirements.

We can provide a standard or bespoke lifting davit to meet all your needs. We provide custom engineered systems across all the industries we serve. Although we offer a wide variety of standard products, we are aware that many projects are unique and therefore require unique solutions. We take great pride in “over delivering” on those unique challenges.

This guide offers advice by application and by type with specification on each standard model available with links to further information and, if you need it, a no-obligation quotation request service for all products outlined in this guide.

**For more details on all the lifting davits shown in this guide  
and to request a quotation [CLICK HERE](#)**





# DLHONLINE Lifting Davits

## Types available

Lifting davits are considered the most effective solution for remote work site applications where standard cranes and standard lifting apparatus would be too cumbersome or expensive to provide.

### Portable Davits



Portable lifting davits which can easily be dismantled into manageable components and carried to the work site for manual erection on a fixed socket mounted at each location.

They offer a cost effective solution and provide a safe method of lifting and handling loads in close proximity from 125 kg up to around 1,000 kg.

### Stationary Davits

Stationary davits, either on a fixed base or socket can be utilised for permanent in-situ immediate use or where repetitive handling is required.

These can offer greater load capacity (Standard up to 1270 kg and greater reach up to 3000 mm). Special models up to 2500 kg available on request.

The davit crane shown on the right provides enough horizontal reach to clear the edge of the building and enough vertical height to lift large loads over the parapet along the edge of the roof.

The winch has been modified to accommodate lifts over 60 metres below roof level.



### Bespoke Davits



Bespoke models can be designed for special applications and fixing requirements such as machine or structure mounting.

This uniquely designed mobile catwalk crane is fitted with a slide-out platform that extends beyond the crane base making it able to support the payload.

Very long reach options may also be possible, but for controllability over an extended working envelope a portable mobile gantry, fixed swing jib or light crane track may be more effective.

# DLHONLINE Lifting Davits

## Types available

Lifting davits can be provided to meet all industries and applications where a lightweight, compact lifting crane is needed.

## Mountings

In addition to stationary davits which are required for permanent site position, There are various socket mounted models which are designed to be portable. These offer multi-site use and major cost savings as one davit can be mounted on multiple sites as and when required. Utilising permanently installed low cost sockets in-situ where needed.

These sockets vary in design but are generally available in three standard configurations:

Pedestal or surface mounted. Usually fixed with four or more resin anchor bolts, These are particularly suited for retro-fitting to existing floor slabs or plinths. In conjunction with post extensions they also increase the working height of the davit.

Flush or cast-in sockets which are embedded into a concrete slab or sometimes in an existing slab which is core drilled. This type is particularly useful in confined spaces where a pedestal socket would be a trip hazard.

Wall or side mounted sockets for resin anchored attachment to concrete walls or bolted to steel structures or machines.



Special sockets can be designed to suit specific requirements such as mounted within fabricated structures or on machines etc.

Standard sockets are offered in a durable galvanised finish. Some lifting davit models can also be provided in special paint finishes and in stainless steel for harsh environments.

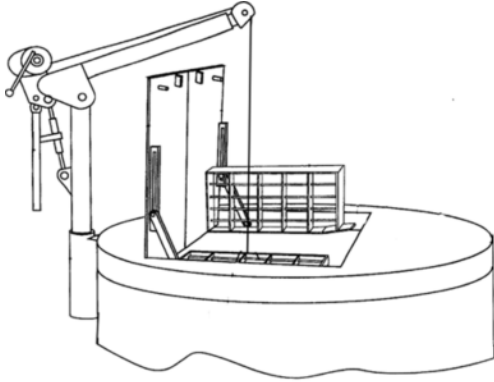




# DLHONLINE Lifting Davits

## Applications

### Waste Water Plants



Maintenance of a wastewater plant can be labour intensive. Placing pumps and mixers, lifting them out of tanks for maintenance; it all takes time and effort.

Portable and stationary davit cranes help boost efficiency of these Operations and saving on mobile crane hire costs.

For lifting submerged pumps in wet wells etc. portable lifting davits have been the preferred option for many decades.

Different methods for actually lifting the pumps have employed:

### Pump Lifting Methods

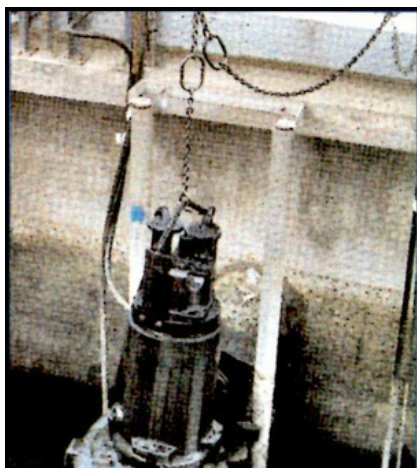
For shallow wells the blue rope method with a sliding hook is sometimes used. A looped rope is passed through the pump hoop and a hook assembly is spliced on the rope and the rope is fixed to a cleat or rail at the top of the chamber. When lifting is required, the hook assembly is attached to the lifting davit hoist or winch rope and the hook is travelled down the rope loop to hook onto the pump to lift it.



For deeper wells, a permanent pump lifting chain or wire rope method should be employed. Over the years various methods have been adopted.

The most common method is to use a short drop chain attached to a separate anchor point on the davit arm and another longer chain attached to the pump.

By using the davit hoist or winch, the pump is lifted in stages by raising the pump chain to the height of the davit, then transferring the load chain to the drop chain hook and then taking another bite of the pump chain to raise it further until the pump is clear for rotation.



Probably the most common method for use with a lifting davit hoist is galvanised or stainless steel short link pump lifting chain with a welded lifting ring or link at one metre intervals (See photo left) to which the lift hoist and bite hooks can be alternately attached.

Continued next page

# DLHONLINE Lifting Davits

## Applications

### Pump Lifting Methods - continued



Another method is to use a short link pump chain and have safety grab hook assemblies attached to the anchor point and the hoist so that the grab hook can attach to any link for the lift and bite method. The pump chain is fed through the hoist grab link and then through the anchor point link. Although it can be less expensive this method is surprisingly rarely used.

**Special Note.** The use of uncertified long link chain which can accept a shackle through the links has been banned by the Health and Safety Executive and must never be used for lifting application.



Until recently, using a lifting davit and winch with the wire rope attached to the pump meant that the lifting davit had to remain in position.

However, Lifting davit manufacturers:Thern inc. have devised a detachable rope system. For quickly attaching or removing the wire rope.

The wire rope dead end is equipped with a swaged ball fitting. This allows the operator to leave the wire rope attached to the load at all times and simply remove the rope from the winch.

To secure the rope at the site, Thern also supply an optional cable storage reel and wire rope keeper plate which can be attached to or near the davit socket ready for the next lift.

Using stainless steel rope offers a much cheaper method of pump lifting than chain and it allows the davit to be stored or used elsewhere.

Swaged Ball Fitting



Wire Rope Keeper



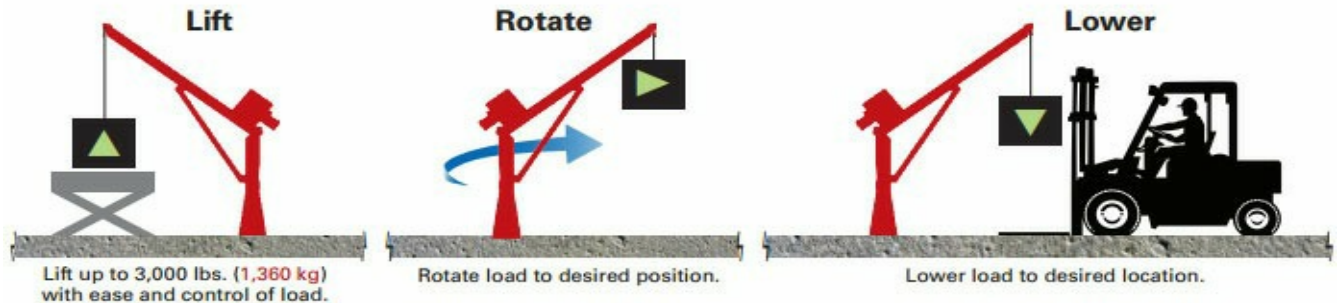
Wire Rope Cable Reel



# DLHONLINE Lifting Davits

## Applications

### Manufacturing



Portable and stationary lifting davits are ideal for workshops for tool changing, reel changing and maintenance tasks.



Sockets can be positioned within each work area without taking up valuable operator space. The lifting davit can be quickly installed as and when required. Some models are available with a de-mountable mobile wheeled base.

For food processing areas, lifting davits and or sockets can be provided in all stainless steel finish including winches and ropes.

Cost effective with low cost installation.



#### Davit Installation

In typical Thern davit installations, the base is simply anchored to existing industrial floor slab with 4 anchor bolts.

Additional bases can be installed in multiple locations.



#### Jib Installation

Typical jib installation requires new concrete footing a minimum of 4' x 4' x 4' or greater. (1.2192m x 1.2192m x 1.2192m)



# DLHONLINE Lifting Davits

## Applications

### HVAC and Maintenance

Heating, Ventilating and Air Conditioning (HVAC) applications typically involve mounting davit cranes topside on multi-story buildings.

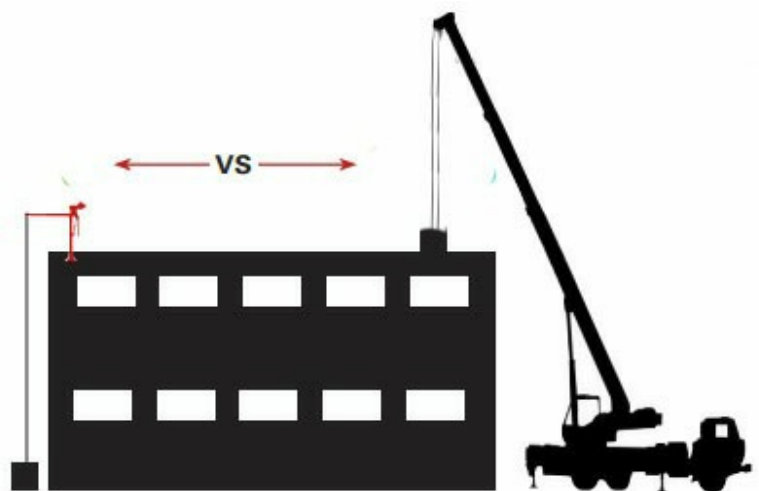
Lifting davits are ideal for raising and lowering HVAC equipment during installation and maintenance.



### Major savings on crane hire

#### Rooftop Installations

Therndavits installed on rooftop applications provide an economical, permanent solution for lifting tools, maintenance and HVAC equipment versus expensive mobile crane rentals.





# DLHONLINE Lifting Davits

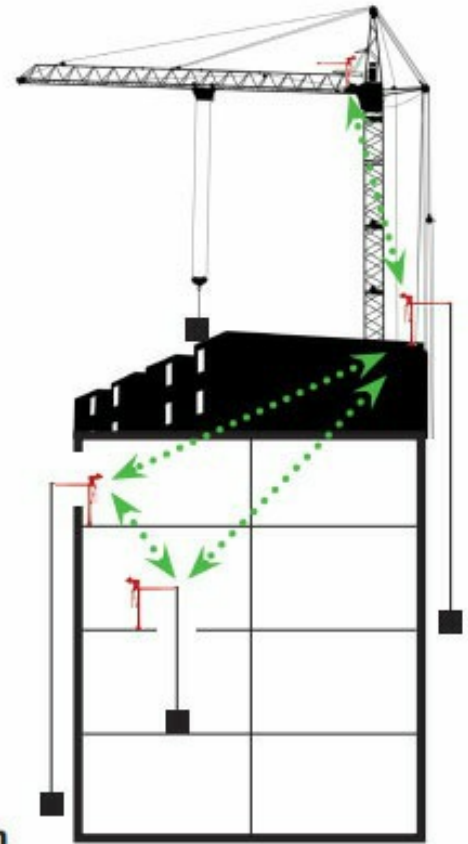
## Applications

### Construction

Construction sites have many uses for portable davit cranes. Contractors often require lifting power at multiple locations.

Lifting davit cranes can provide them with the load handling power they need in portable, compact units.

Socket can be temporarily or permanently installed to the structure or floor slabs.



### Construction Site Applications

For small lifts up to 2,000 lbs (907 kg).

Then davit cranes offer a convenient, portable, economical alternative vs on-site oversized tower cranes.

### Truck Mounting

Lifting davits are perfect for truck mounting, we can provide the right equipment for the job.



- Wheel
- Wall
- Flush
- Pedestal

Lightweight, portable, electric or hand operated. Use in truck, or remove and install in shop using a variety of other bases.



Heavy-duty, expensive truck and equipment. Limited use to truck access. Permanent, cannot be removed.

# DLHONLINE Lifting Davits

## Applications

### Marine

Lifting davits provide easy mast rotation for load positioning, boom extension for adjustable reach and can be finished with special marine coatings to withstand the harshest environment.

Whether on shore or at sea, lifting davit cranes and winches are ideal for marine based service.



Maritime applications include deck mounted lifting davits and winches for load handling, pipe suspension etc.—all of which can be efficiently and economically handled with the versatility, power and durability of a lifting davit.

### Aerospace and Defence



When reliable load handling is essential to critical operations, government agencies around the world use lifting davits.

Whether at airfields lifting hatches off jets or on communications towers hoisting maintenance equipment, even on submarines,

Lifting davits can be designed to meet the most demanding specifications and perform dependably in challenging environments.

Please don't hesitate to contact our sales team to discuss your application in more detail



# DLHONLINE Lifting Davits





## Types available

### Davit Models





The range available is designed to meet varying requirements and models are available in steel, aluminium and stainless steel.

This comprehensive overview of the types offered in this guide and more information is available in the following pages detailing information for each model including general dimensions and load capacities.

**For more details on all the lifting davits shown in this guide  
and to request a quotation [CLICK HERE](#)**

<b>Lean-Over Galvanised Steel Lifting Davits with Winch</b>  <b>500 kg to 1000 kg</b>	<b>Lean-Over Galvanised Steel Lifting Davits</b>  <b>500 kg to 1000 kg</b>	<b>Split Pillar Galvanised Steel Lifting Davits</b>  <b>Up to 500 kg</b>	<b>De-mountable Split Pillar Lifting Davits with Hand Winch</b>
			
Economically priced Portable davits fitted with lifting wire rope winch	Economically priced Portable davits for use with hoist and slave chain -	Economically priced Portable davits for use with hoist and slave chain	Ideal for general lifting operations in multiple locations

<b>Gebuwin Swing Lifting Davit Crane with integral winch also in stainless steel</b>	<b>Thern First Mate Series 5PF5 Portable Lifting Davit Crane with winch options up to 385 kg capacity</b>	<b>Thern Ensign Series Portable Davit Cranes Models 5PA5 up to 227 kg and 5PA10 up to 544 kgs</b>	<b>Thern Commander Series 5PT10 544 kg 5PT20 907 kg Portable Lifting Davit With Winch options</b>
			
Compact davit fitted with an integral winch.	Corrosion-resistant finishes: galvanized, 304 stainless steel, 316 stainless steel, and epoxy	Corrosion-resistant finishes: galvanized, 304 stainless steel, 316 stainless steel, and epoxy -	Corrosion-resistant finishes: galvanized, 304 stainless steel, 316 stainless steel, and epoxy

# DLHONLINE Lifting Davits

## Types available - continued

### Davit Models

This comprehensive overview of the types offered in this guide and more information is available in the following pages detailing information for each model including general dimensions and load capacities.

**For more details on all the lifting davits shown in this guide  
and to request a quotation [CLICK HERE](#)**

**CMU300 - 300 Kg  
Portable Aluminium  
Lifting Davit - 2 metre  
reach**



Portable davits for use with  
hoist and slave chain  
Optional height extension

**CMU300T - 300 Kg  
Portable Aluminium  
Lifting Davit with Winch  
2 metre reach**



Portable davits with wire  
rope winch  
Optional height extension

**CMU500 - 500 Kg  
Portable Aluminium  
Lifting Davit  
1.5 metre reach**



Portable davits for use with  
hoist and slave chain  
Optional height extension

**CMU500T - 500 Kg  
Portable Aluminium  
Lifting Davit  
1.5 metre reach**



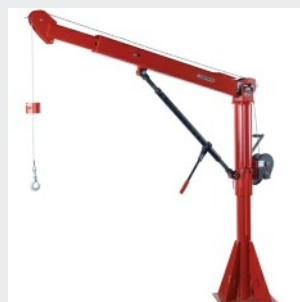
Portable davits with wire  
rope winch  
Optional height extension -

**Thern Admiral Series  
5PT30 1363 kg  
Portable Lifting Davit  
with Manual or Electric  
Winch**



Corrosion-resistant  
finishes: galvanized, 304  
stainless steel, 316  
stainless steel, and epoxy

**Thern Captain 5FT25  
Up to 1270 kg  
Fixed Lifting Davit  
Cranes**



Corrosion-resistant  
finishes: galvanized, 304  
stainless steel, 316  
stainless steel, and epoxy

**Easy Lift Davit - 500 kg  
WLL Lightweight  
Aluminium Goods  
or rescue Davit**



Portable davits for use with  
hoist and slave chain or  
with rescue winch and  
fall arrest.

**Bespoke Lifting Davits  
designed to meet your  
specific requirements**



Can't find the model  
to suit you job?  
We can provide one off  
specials (Contact us).



# DLHONLINE Lifting Davits

## Models and Specifications

With portable and stationary lifting davits with capacities from 225 kg to 1360 kg, there is a solution for just about every job or environment.

**COMALU** ultra lightweight davits in aluminium for one man portability are offered with winch operation or for chain block suspension.

[See video here.](#)



**THERN** range of Davits and winches are world class steel lifting davits in painted, galvanised or stainless steel with manual or electric winches

[See a video here.](#)



Bespoke models can also be provided by THERN. Use our online form to enter your requirements.

### Gebuwin

Gebuwin produces three types of lifting davits, which vary in lifting capacity and length of the boom. The integrated winch and cable makes the davit is not only compact but also low-maintenance.

[See a video here](#)



**DALE** UK manufactured galvanised steel lifting davits are an economy option with various socket diameters. Plus man-riding options for rescue and work suspension. Please contact us for your non-standard requirements.

**Easy Lift** aluminium lifting davit is a popular lightweight goods lifting and rescue davit made in the UK.

All portable models are offered with cast-in, surface mounted or wall mounted sockets as standard. However, special mounts are also available on request.

You are very welcome to contact our sales team for advice on the right lifting davit for your application. Information on installation or to discuss your specific requirements in more detail. Telephone 0161 225 1990 or email [sales@dale-lifting.co.uk](mailto:sales@dale-lifting.co.uk)



**dlhonline.co.uk**      **0161 223 1990**

# DLHONLINE Lifting Davits



## Galvanised Steel Lean-Over (Cranked arm) Lifting Davits - 500 kg and 1000 kg capacities

The steel galvanised lean over davit is a 3-piece design (sections below 25 kg) with a range of socket pin diameters (For special pin diameters please contact us). Manufactured from mild steel and galvanised to BS EN 1461.

This versatile, portable piece of equipment is available in a variety of specifications. Designed as a transportable device, the steel lean-over davit is often used in locations where it can be stored on-site.

Fitted with a castellated offset suspension point, allowing the chain block or hoist to be adjusted from the central point of the lift.

Also fitted with a secondary lifting point for a slave suspension chain for index lifting pumps from wet wells etc.

Alternative socket pin diameters can be manufactured as required to suit specific requirements (Contact us)

Subject to customer requirements, these davits can also be supplied in either stainless steel 304 or stainless steel 316 (Contact us)

### Davit Dimensions

Model	Capacity (kg)	Reach mm	Height to suspension point mm	Rotation (Degrees)	Pin Dia. Mm	Finish
LOD05750	500	750	1960	360	65	Galvanised
LOD051000	500	1000	1960	360	65	Galvanised
LOD051200	500	1200	1960	360	65	Galvanised
LOD101070	1000	1070	2010	360	75	Galvanised

### DAVITS ARE NOT SUITABLE FOR LIFTING PERSONS

**Optional Extras** to meet your special requirements are available/ Options include:

- Hook suspension manual chain hoists in standard or anti-corrosion finish
- Hook suspension electric hoists in choice of voltages with various lift heights to suit your application.
- Galvanised or stainless steel screw pin or safety shackles
- Galvanised or stainless steel snub lift chain with shackle suspension and suspension hook
- Galvanised or stainless steel pump lifting chain with rings at 1000 mm intervals plus shackles to suit load connection requirements.

### Sockets

A range of galvanised socket types are available to order for use with your new davit. These davit sockets can also be ordered separately for your existing davit(s), subject to socket diameter (Please contact us for prices).

Lifting davit sockets are readily available for flush mounting (Cast-in), surface mounted (Pedestal) or Wall /side mounted applications.

Special Note - To comply with statutory regulations and manufacturers installation instructions each socket fixing will require proof load testing after installation and before being taken into use. Subject to location we can undertake this work and provide a report of proof test. Please contact us for a quotation.

# DLHONLINE Lifting Davits



## Lean-Over Galvanised Steel Lifting Davits with Winch 500 kg and 1,000 kg capacities

### Galvanised Lean Over Davit with Hand Winch

The steel galvanised lean over davit is a 3-piece design (sections below 25 kg) with a range of socket pin diameters (For special pin diameters please contact us). Manufactured from mild steel and galvanised to BS EN 1461.

This versatile, portable piece of equipment is available in a variety of specifications.

Designed as a transportable device, the steel lean-over davit is often used in locations where it can be stored on-site.

Fitted with a hand-operated winch complete with wire rope and swivel lifting hook or shackle for load connection.

Subject to customer requirements, these davits can also be supplied in either stainless steel 304 or stainless steel 316 (Contact us)

### Davit Dimensions

Model	Capacity (kg)	Reach mm	Height to suspension point mm	Rotation (Degrees)	Pin Dia. Mm	Finish
LODW05750	500	750	1900	360	65	Galvanised
LODW051000	500	1000	1900	360	65	Galvanised
LODW051200	500	1200	1900	360	65	Galvanised
LODW101070	1000	1070	2250	360	75	Galvanised

When a portable solution is required, lifting davits are often the best option due to their versatility. When coupled with the associated davit socket (Surface mounted, cast-in or wall mount, the portable lifting davit provides a cost-effective way of lifting loads in multiple locations, this is because one davit can be moved between multiple different sockets. Not suitable for man-riding applications.

Our portable davits have a WLL (Working Load Limit) of up to 1000 kg, couple this with varying height, reach and slew capabilities and they provide a solution for the majority of problems you could face.

If our standard products do not meet your requirements, we also have the capability to design and manufacture bespoke davits and sockets to suit your requirements (Contact us for quotation).

**SPECIAL NOTE** - Winch models can vary dependent on length of rope required. Hand winches are typically rated at 1<sup>st</sup> layer capacity. For subsequent layers the capacity is reduced. For full rope capacity on the drum, the capacity can often be reduced by half or more. For applications where longer length ropes are required we will offer higher capacity winches. For applications where the load will be less than the davit capacity a smaller winch can be used and the davit will be de-rated accordingly. Standard ropes are galvanised steel with thimble eye and eye type latch hook

Please specify the rope operating length and load capacity required and we will quote for the correct rope and winch for your application.

### NOT SUITABLE FOR LIFTING PERSONS

**Lifting davit sockets** are readily available for flush mounting (Cast-in), surface mounted (Pedestal) or Wall /side mounted applications.

**Special Note** - To comply with statutory regulations and manufacturers installation instructions each socket fixing will require proof load testing after installation and before being taken into use. Subject to location we can undertake this work and provide a report of proof test. Please contact us for a quotation

**dlhonline.co.uk 0161 223 1990**



# DLHONLINE Lifting Davits

## Galvanised Steel Split Pillar Lifting Davits - 500 kg Capacity



The portable split pole davit is a 3-piece assembly manufactured from mild steel and galvanised to BS EN 1461.

With a slew of 270 degrees and a socket pin to suit the standard 65 mm dia sockets. Also available to suit a 63.5 mm diameter socket or other diameters as required (Contact us).

This davit is available with a split of either 70/30 or special 50/50 (contact us) and in a range of reaches to suit individual customer requirements. (Contact us)

Subject to customer requirements, this davit can also be supplied in stainless steel 304, stainless steel 316 or as a lightweight aluminium model. The range offers precision made lifting equipment to match your operatives handling expectations and site location requirements. These lifting davit cranes are socket mounted for siting in restricted spaces, at the side of hand-railing (Very good swing height clearance) or locations where obstacles or remote site access prevents standard cranes being deployed.

### Davit Dimensions

Model	Capacity (kg)	Reach (A) mm	Height to suspension point mm	Rotation (Degrees)	Pin Dia. Mm	Finish
VSPD05760	500	760	2200	270	65	Galvanised
VSPD051000	500	1000	2200	270	65	Galvanised
VSPD051200	500	1200	2200	270	65	Galvanised

### NOT SUITABLE FOR LIFTING PERSONS

Optional extras to meet your special requirements are available

Options include:

Hook suspension manual chain hoists in standard or anti-corrosion finish

Hook suspension electric hoists in choice of voltages with various lift heights to suit your application.

Galvanised or stainless steel screw pin or safety shackles

Galvanised or stainless steel index lift chain with shackle suspension and suspension hook

Galvanised or stainless steel pump lifting chain with rings at 1000 mm intervals plus shackles to suit load connection requirements.

### Sockets

A range of galvanised socket types are available to order for use with your new davit. These davit sockets can also be ordered separately for your existing davit(s), subject to socket diameter (Please contact us for prices).

Lifting davit sockets are readily available for flush mounting (Cast-in), surface mounted (Pedestal), Wall /side or bridge mounted applications.

Special Note - To comply with statutory regulations and manufacturers installation instructions each socket fixing will require proof load testing after installation and before being taken into use. Subject to location we can undertake this work and provide a report of proof test. Please contact us for a quotation

# DLHONLINE Lifting Davits



## Galvanised Steel Demountable Split Pillar Lifting Davits with Hand Winch - 500 kg capacity

The demountable split pole davit is a 3-piece assembly manufactured from mild steel and galvanised to BS EN 1461.

Fitted with a hand-operated drum winch complete with wire rope and swivel lifting hook or shackle for load connection.

With a slew of 360 degrees and a socket pin to suit the standard 65 mm dia sockets.

Also available to suit a 63.5 mm diameter sockets or other diameters as required (Contact us).

This davit is available with a standard split 70/30 or special 50/50 (contact us) and in a range of reaches to suit individual customer requirements. (Contact us)

Subject to customer requirements, this davit can also be supplied in stainless steel 304, stainless steel 316 or as a lightweight aluminium model.

These unit offers precision made work equipment to match your operatives handling expectations and site location requirements. They can be positioned at the side of hand-railing or locations where obstacles or remote site access prevents standard cranes being deployed.

### Davit Dimensions

Model	Capacity (kg)	Reach mm	Height to suspension point mm	Rotation (Degrees)	Pin Dia. Mm	Finish
VSPDW05760	500	760	1930	270	65	Galvanised
VSPDW051000	500	1000	1930	270	65	Galvanised

### Mounting Sockets

When a portable solution is required, lifting davits are often the best option due to their versatility. When coupled with the associated davit socket (Surface mounted, cast-in or wall mount, the portable lifting davit provides a cost-effective way of lifting loads in multiple locations, this is because one davit can be moved between multiple different sockets.

### Not suitable for man-riding applications.

Our portable winch davits for handling a wide variety of loads have a WLL (Working Load Limit) of 500 kg, couple this with varying reach and slewing capabilities and they provide a solution for the majority of problems you could face in many applications and locations.

If our standard products do not meet your requirements, we also have the capability to design and manufacture bespoke davits and sockets to suit your requirements (Contact us for quotation).

# DLHONLINE Lifting Davits



## Gebuwin Swivel Davit Crane 125 kg -500 kg Capacities

Gebuwin has developed a modern designed swivel davit crane especially for lifting goods on location. This davit crane helps you to carry out your work efficiently without the risk of physical strain. The lifting davit is lightweight and is therefore ready for use within a few seconds thanks to the folding system of the boom.

When the davit is placed in the accompanying floor socket, it can rotate 360 degrees. Gebuwin produces three lifting davits, which vary in lifting capacity and length of the boom. Because of the integrated winch and cable, the davit is not only compact but also low-maintenance paint thickness is 60 – 80 Micron in RAL 7035 (Grey). The crank is also adjustable in length so that the hoisting speed can be adjusted.

### SPECIFICATIONS

- Robust And Safe Lifting Davit Crane In Compliance With EN13157
- Ready To Use In 5 Seconds - Easy To Transport
- Integrated Winch And Cable In An Ergonomic Modern Design
- Load Pressure Brake With Double Ratchet System For Safe Stable Hold Of The Load In Any Position
- Possible To Rotate 360° - Adjustable Crank, With Ergonomic Grip
- Maintenance Free
- Including 8 Metre Wire Rope (5 mm dia.) With a latch hook



*Also available  
in 316  
stainless steel*

Models	SD125	SD250	SD500
1st cable layer (kg)	125	250	500
Last cable layer (7) (kg)	125	250	268
Crankforce 1st cable position (daN)	10	10	10
Hoisting length by one rotation of the crank, 1st layer (mm)	20	20	20
Max. cable storage (metres)*	18	18	13
Diameter cable (mm)*	4	4	5
Min. breaking load cable (kN)	9	9	15
Own weight SD(cable included) (kg)	30	30	30
Own weight box column (kg)	9 kg	9 kg	9 kg

### Sockets:

Socket Floor Mounted pedestal base, In-Ground Socket In Concrete or Side mounted socket for Wall Mounting

### Options

Zinc Plated Finish With A Minimum Of 6 Microns

- ATEX For Zone 2 And 22



# DLHONLINE Lifting Davits



## PORTABLE AND STATIONARY DAVIT CRANES

Thern davits and cranes are available in multiple styles, using a variety of sizes, materials, options and load weight capabilities to meet your targeted application needs, be it brute strength or corrosion resistant reliability. For positioning loads up to 1363 kg using a crane or davit, there's only one place to turn, Thern.

To find out which model you need you can download our Thern Lifting davit at-a-glance chart.

**PORTABLE / STATIONARY  
DAVIT CRANES  
at a GLANCE**

DLHONLINE.CO.UK  
UK MAIN AGENTS

No one knows cranes like Thern. We build our stationary davit cranes and portable davit cranes to exacting specifications to ensure long-lasting performance and reliability.

Our standard cranes are available in multiple styles and sizes to raise and lower loads up to 3,000 lbs.

**Elevate Your Expectations**

Choose a crane that's built to last lift after lift. We also offer a variety of finish, base and winch options to meet the needs of your specific application.

First Mate 500 Series  
S122

Ensign 500 Series  
SPA5

Ensign 1000 Series  
SPA10

Commander 1000 Series  
SPT10

Commander 2000 Series  
SPT20

Captain 1500 Series  
S71

Captain 2200 Series  
S72

Admiral 3000 Series  
SPT30

MODEL	Max Capacity	PORTABLE		MAXIMUM HOOK				ADJUSTABLE BOOM		WINCHES				FINISHES						Quick Disconnect Anchor	WHY THIS CRANE?
		Yes	No	Reach	Height (above floor)	Standard Lift (below floor)	Long Lift* (below floor)	Length	Angle	Spur	Worm	SS Spur	AC	DC	Powder Coat (Std)	Enamel Paint (Std)	Galv	304 SS	316 SS		
First Mate 500 Series S122	500 lbs 226 kg	•		42 in 1066 mm	60 in 1524 mm	65 ft 19.8 m	240 ft 73.1 m	•	•	•	•	•	•	•	•		•	•	•	•	Lightweight, economical, easy to carry and easy to use, the First Mate 500 is perfect for a wide variety of simple jobs where adjustable height and reach are not required.
Ensign 500 Series SPA5	500 lbs 226 kg	•		36 in 914 mm	101 in 2565 mm	75 ft 22.8 m	240 ft 73.1 m	•	•	•	•	•	•	•	•	•	•	•	•	•	Longer mast and boom provide increased hook height, making the Ensign 500 an excellent choice for clearing tall objects, such as hand rails, or lifting tall loads.
Ensign 1000 Series SPA10	1200 lbs 544 kg	•		48 in 1219 mm	120 in 3048 mm	71 ft 21.6 m	240 ft 73.1 m	•	•	•	•	•	•	•	•	•	•	•	•	•	Shorter horizontal reach than the Commander Series, the Ensign 1000 features increased vertical hook height for clearing tall objects, such as hand rails, or lifting tall loads.
Commander 1000 Series SPT10	1000 lbs 453 kg	•		66 in 1678 mm	85 in 2159 mm	77 ft 23.4 m	240 ft 73.1 m	•	•	•	•	•	•	•	•	•	•	•	•	•	Our work horse crane for mid-range loads, easy to carry when disassembled, and includes an adjustable boom to reach a wide range of height and reach combinations.
Commander 2000 Series SPT20	2000 lbs 907 kg	•		82 in 2082 mm	97 in 2463 mm	75 ft 22.8 m	350 ft 106.6 m	•	•	•	•	•	•	•	•	•	•	•	•	•	Our largest fully portable crane, capable of handling larger loads with an adjustable boom for a full range of height and reach options, with only a 6" concrete floor required.
Captain 1500 Series S71	1500 lbs 680 kg	•		87 in 2200 mm	118 in 2991 mm	56 ft 17.1 m	290 ft 88.3 m	•	•	•	•	•	•	•	•	•	•	•	•	•	Designed for permanent installation and smooth rotation, the Captain 1500 provides extended height and reach, and still only requires a 6" concrete floor for installation.
Captain 2200 Series S72	2200 lbs 997 kg	•		106 in 2692 mm	140 in 3556 mm	52 ft 15.8 m	350 ft 106.6 m	•	•	•	•	•	•	•	•	•	•	•	•	•	Designed for permanent installation and smooth rotation, the Captain 2200 handles larger loads with extended reach and height. Requires a foundation pad for installation.
Admiral 3000 Series SPT30	3000 lbs 1360 kg	•		112 in 2844 mm	153 in 3886 mm	55 ft 16.8 m	350 ft 106.6 m	•	•	•	•	•	•	•	•	•	•	•	•	•	The best of all worlds, handling large loads up to 1.5 tons, with an adjustable boom for high lifts and almost 10 feet of reach, and can still be disassembled for relocation.

MADE IN USA CG-0814

\* Long lift ratings require electric winches. Max capacity may vary depending on wire rope diameters. Contact factory.

◉ Boom angle adjustment with optional ratchet-style screw-jack.

▲ Non-standard configuration.

MADE IN USA

DLHONLINE

These products are not for lifting people or things over people.

www.thern.com • 1-800-943-7648

UK 0161 223 1990



ISO  
9001:2008  
REGISTERED



LEAVE THE HEAVY LIFTING TO US

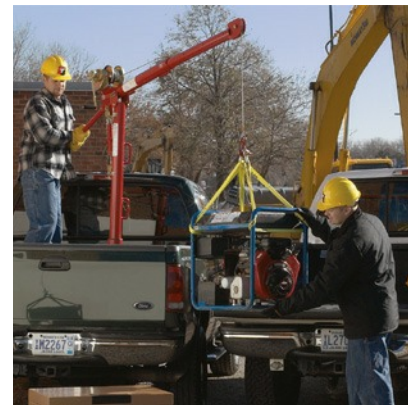
dlhonline.co.uk 0161 223 1990

# DLHONLINE Lifting Davits



**DAVIT CRANES**  
**For all industries**

**Water/Wastewater**  
**Marine**  
**Construction**  
**Oil & Gas**  
**Manufacturing**  
**Utilities/Power Generation**  
**Defence/Government**  
**Bulk Handling**



**dlhonline.co.uk**      **0161 223 1990**

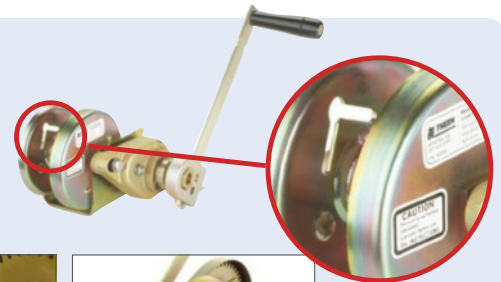
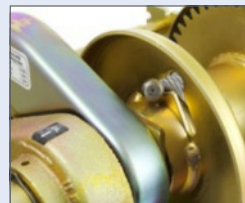
# DLHONLINE Lifting Davits



## Thern Rugged STEEL Cranes Work Harder

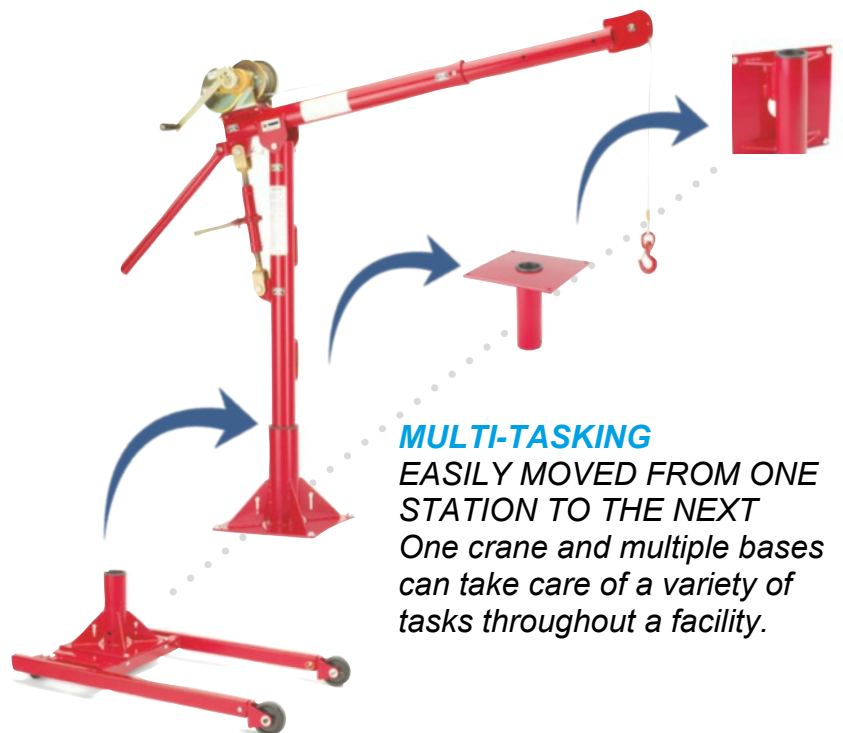
### QUICK DISCONNECT ANCHOR

Wire rope is secured to an anchor hole in the flange of the drum, allowing you to rapidly attach or remove wire rope from the crane so wire rope assemblies can be left permanently attached to submersed pumps while the crane is moved to another location.



### HAND OR POWER OPERATION

Thern Davit Cranes can be configured with a manual winch for short, infrequent lifts, or a power winch for longer lifts.



### MULTI-TASKING

EASILY MOVED FROM ONE STATION TO THE NEXT  
One crane and multiple bases can take care of a variety of tasks throughout a facility.



# DLHONLINE Lifting Davits



*...to Make Your Work Easier*



- **ADJUSTABLE  
BOOMS  
TELESCOPING &  
360° ROTATION**

*Booms adjust to different positions for operation. Cranes rotate 360° in a*

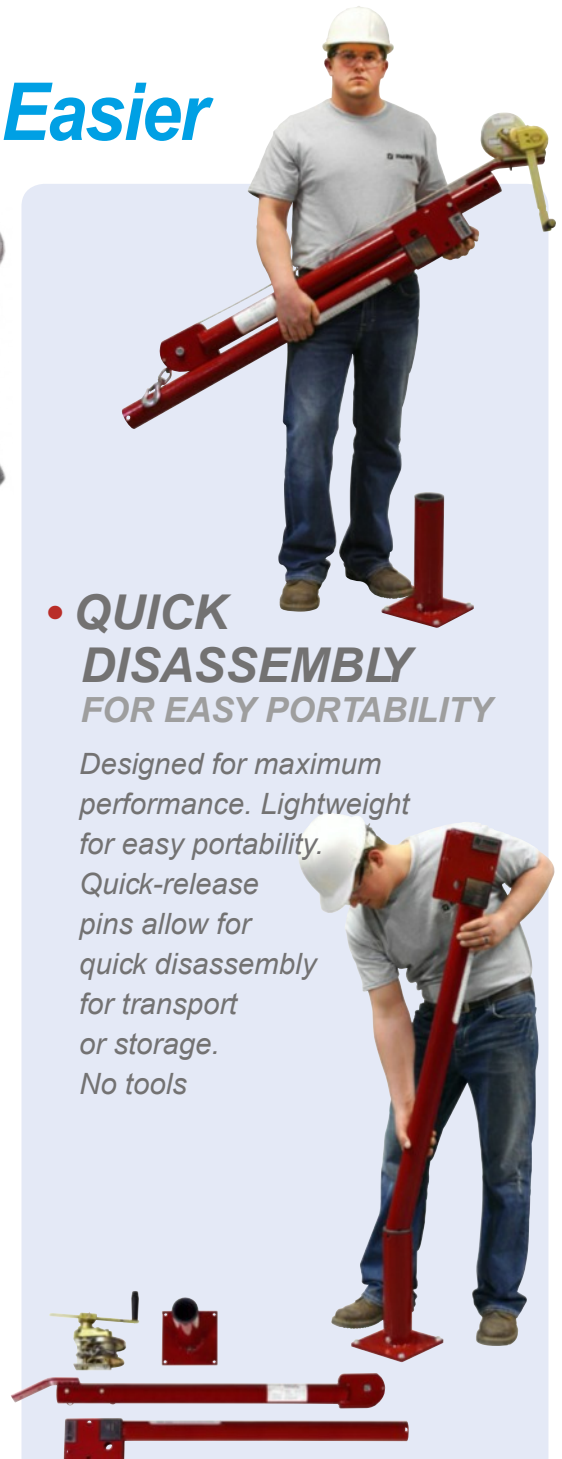
- **EASILY INSTALLED  
NO SPECIAL TOOLS NEEDED**

*Our bases are easily installed to a variety of surfaces with anchor bolts or other*



- **QUICK  
DISASSEMBLY  
FOR EASY PORTABILITY**

*Designed for maximum performance. Lightweight for easy portability. Quick-release pins allow for quick disassembly for transport or storage. No tools*

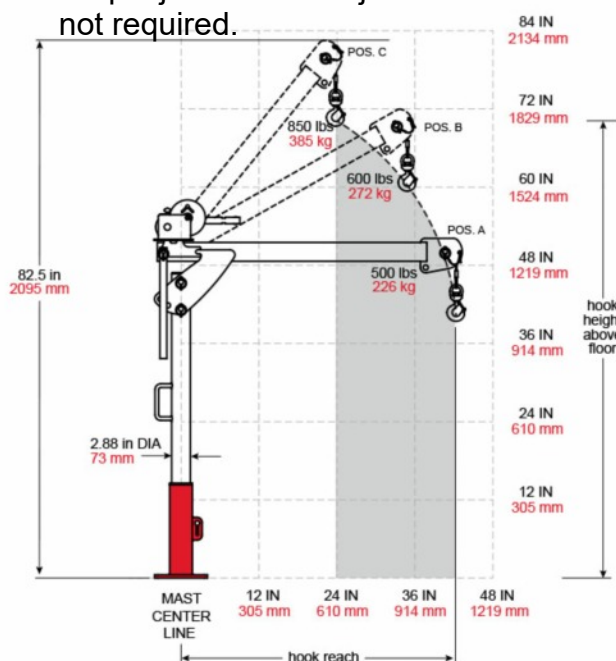


# DLHONLINE Lifting Davits

## **FIRST MATE** 5PF5 Up to 385 kg capacity

 **THERN**

Lightweight, economical, easy to carry and easy to use, the First Mate Davit Crane is perfect for a wide variety of simple jobs where adjustable reach is not required.



### WELDED STEEL CONSTRUCTION

Crane boom, mast and base fabricated from heavy duty structural steel that limits deflection and meets ASTM standards. Features a built-in 3:1 design factor that stands up to abuse.

### CORROSION RESISTANT FINISH

Electrostatic powder coating on crane, zinc plating on winches, and stainless steel fasteners combine to resist corrosion in harsh environment. Other options available including galvanized and stainless steel.

NOTICE: These products are not for lifting people or things over people.

### QUICK DISCONNECT ANCHOR

On end of wire rope. For quickly attaching or removing wire rope equipped with a swaged ball fitting.

### MANUAL or POWER OPERATION

An economical solution to your lifting needs, Thern davit cranes can be configured with a spur gear hand winch equipped with automatic disc brake for load control on short, infrequent lifts; or a power winch for longer lifts and heavier loads. Winch is located behind the crane at the right height for ergonomic operation.

### NYLATRON FLANGE BEARING

Supports the mast at the top of the base and assists with the crane's smooth rotation.

### ROLLER ASSEMBLY

Crane mast and boom rotate on a bolt and roller assembly located in the bottom of the base.

### CRANE STANDARDS

- CE cranes available
- PE stamp available upon request
- ISO 9001:2008 Registered

### EASY ASSEMBLY & DISASSEMBLY (FOLD-DOWN)

Quick-release pins allow for easy assembly and quick disassembly for transport or storage. No tools required.



### VARIETY OF BASES

Pedestal, flush and wall mount bases allow for removal of the mast. Wheel base also available. Bases sold separately.



### 2-YEAR WARRANTY

Industry-leading two-year limited warranty.

MADE IN USA



ISO  
9001:2008  
REGISTERED



**dlhonline.co.uk**

**0161 223 1990**

# DLHONLINE Lifting Davits

## **THERN** 5PA5 **ENSIGN** 500

### UP TO 226 KG CAPACITY

Longer mast and boom provide increased hook height, making the Ensign 500 an excellent choice for clearing tall objects, such as handrails, or lifting tall loads.

#### SERIES FEATURES

##### ADJUSTABLE SHEAVE BLOCK

Sheave easily adjusts without tools to 4 different positions allowing for a wide range of height and reach combinations.

##### ADJUSTABLE BOOM ANGLE

Convenient stainless steel adjustment screw, with comfortable turning knob, allows for easy, one-hand boom adjustment when not under load.

##### QUICK-MOUNT WINCH BRACKET

A variety of Thern winches can be attached to the bracket. After a winch is attached to the bracket, the bracket is easily mounted (without tools) to any of three convenient/ergonomic positions on the mast via quick-connect pins.

##### ROLLER/BALL BEARING\*

Standard on Ensign 1000, the specially designed roller/ball bearing at top of base requires no tools for installation. Allows smooth, easy 360° crane rotation under load.

##### STAINLESS STEEL LOCK\*

Stainless steel lock assembly keeps crane in position during winch operation and when not in use. Included with roller/ball bearing.

##### NYLATRON FLANGE BEARING

The Ensign 500 features a nylatron bearing that supports the mast at the top of the base to assist with the crane's 360° smooth rotation.



5PA5

##### MANUAL OR POWER OPERATION

Thern davit cranes can be configured with a manual winch for short, infrequent lifts or a power winch for longer lifts or heavier loads. Choose from Thern's spur or worm gear hand winches or power winches with 230/1/50 as standard. Other voltages available as well as pneumatic, hydraulic or DC Volt power operation.

##### CORROSION RESISTANT FINISH

Electrostatic powder coated crane and stainless steel fasteners combine to resist corrosion in harsh environments. Other options available include: galvanized, stainless steel and epoxy finishes.

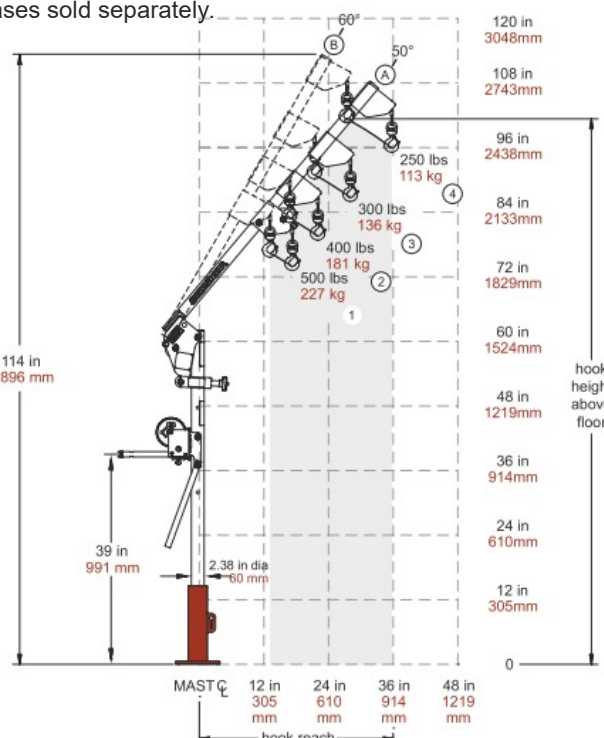
##### EASY ASSEMBLY/DISASSEMBLY

Quick-release clevis style stainless steel pins allow for easy assembly and quick disassembly for transport or storage. No tools required.

NOTICE: These products are not for lifting people or things over people.

##### VARIETY OF BASES

Pedestal, flush and wall mount bases allow for removal of the mast. Bases sold separately.



dlhonline.co.uk

0161 223 1990



# DLHONLINE Lifting Davits

## **THERN** 5PA10 **ENSIGN** 1000

### UP TO 544 KG CAPACITY

#### SERIES FEATURES

##### ADJUSTABLE SHEAVE BLOCK

Sheave easily adjusts without tools to 4 different positions allowing for a wide range of height and reach combinations.

##### ADJUSTABLE BOOM ANGLE

Convenient stainless steel adjustment screw, with comfortable turning knob, allows for easy, one-hand boom adjustment when not under load.

##### QUICK-MOUNT WINCH BRACKET

A variety of Thern winches can be attached to the bracket. After a winch is attached to the bracket, the bracket is easily mounted (without tools) to any of three convenient/ergonomic positions on the mast via quick-connect pins.

##### ROLLER/BALL BEARING\*

Standard on Ensign 1000, the specially designed roller/ball bearing at top of base requires no tools for installation. Allows smooth, easy 360° crane rotation under load.

##### STAINLESS STEEL LOCK\*

Stainless steel lock assembly keeps crane in position during winch operation and when not in use. Included with roller/ball bearing.

##### NYLATRON FLANGE BEARING

The Ensign 500 features a nylatron bearing that supports the mast at the top of the base to assist with the crane's 360° smooth rotation.

##### MANUAL OR POWER OPERATION

Thern davit cranes can be configured with a manual winch for short, infrequent lifts or a power winch for longer lifts or heavier loads.

Choose from Thern's spur or worm gear hand winches or power winches with 230/1/6#50 as standard. Other voltages available

##### CORROSION RESISTANT FINISH

Electrostatic powder coated crane and stainless steel fasteners combine to resist corrosion in harsh environments. Other options available include: galvanized, stainless steel and epoxy finishes.

##### EASY ASSEMBLY /DISASSEMBLY

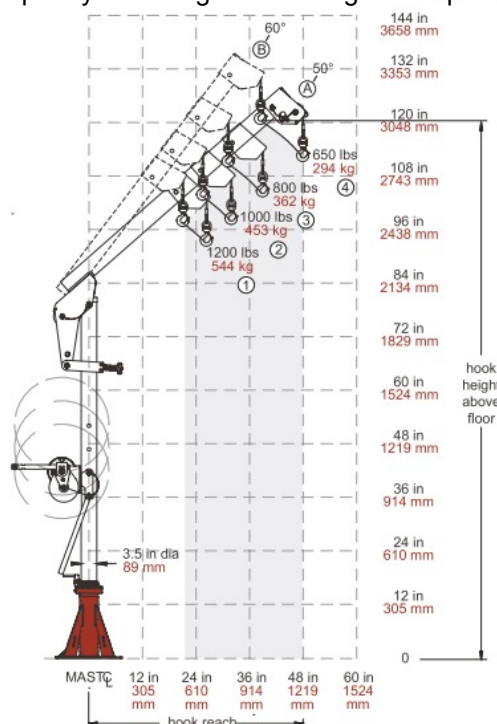
Quick-release clevis style stainless steel pins allow for easy assembly and quick disassembly for transport or storage. No tools required.

##### VARIETY OF BASES

Pedestal, flush and wall mount bases allow for a variety of mounting solutions and are easily installed to a variety of solid surfaces. Bases sold separately.

##### QUICK DISCONNECT ANCHOR

For quickly attaching or removing wire rope



NOTICE: These products are not for lifting people or things over people.

**dlhonline.co.uk**

**0161 223 1990**

# DLHONLINE Lifting Davits

## **THERN 5PT5** **COMMANDER**

**500**

**Up to 295 kg CAPACITY**

### MANUAL OR POWER

operation Thern davit cranes can be configured with a manual winch for short, infrequent lifts or a power winch for longer lifts or heavier loads. Choose from Thern's spur or worm gear hand winches or power winches with 230/1/50V or DC Volt power operation.

### EASY ADJUSTABLE BOOM

Boom extends to three positions with a quick-release pin and adjusts angle with a ratchet.

### CORROSION RESISTANT FINISH

Electrostatic powder-coated crane and stainless steel fasteners combine to resist corrosion in harsh environments. Other options available include: galvanized, stainless steel and epoxy finishes.

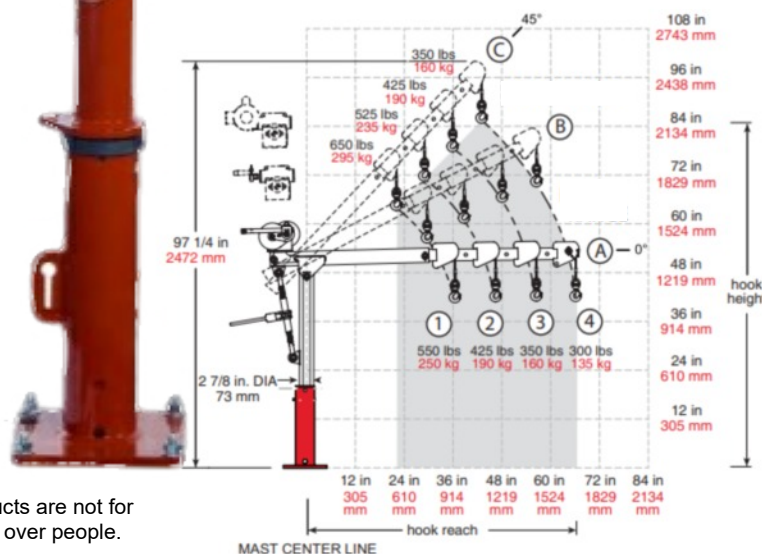
### EASY ASSEMBLY /DISASSEMBLY

Quick-release clevis style stainless steel pins allow for easy assembly and quick disassembly for transport or storage. No tools required.

### QUICK DISCONNECT ANCHOR

For quickly attaching or removing wire rope equipped with a swaged ball fitting - Allows the operator to leave the wire rope attached to the load at all times and simply remove the rope from the winch and attached to the optional wire rope keeper or cable reel.

**VARIETY OF BASES** Pedestal, flush and wall mount bases allow for a variety of mounting solutions and are easily installed to a variety of solid surfaces Bases sold separately.



**dlhonline.co.uk 0161 223 1990**

# DLHONLINE Lifting Davits



**Thern**

**UP TO 454 KG CAPACITY**

## **COMMANDER 5PT10**

**MANUAL OR POWER Operation 1000**

Thern davit cranes can be configured with a manual winch for short, infrequent lifts or a power winch for longer lifts or heavier loads. Choose from Thern's spur or worm gear hand winches or power winches with 230/1/50V or DC Volt power operation.

### **EASY ADJUSTABLE BOOM**

Boom extends to three positions with a quick-release pin and adjusts angle with a ratchet.

### **CORROSION RESISTANT FINISH**

Electrostatic powder-coated crane and stainless steel fasteners combine to resist corrosion in harsh environments. Other options available include: galvanized, stainless steel and epoxy finishes.

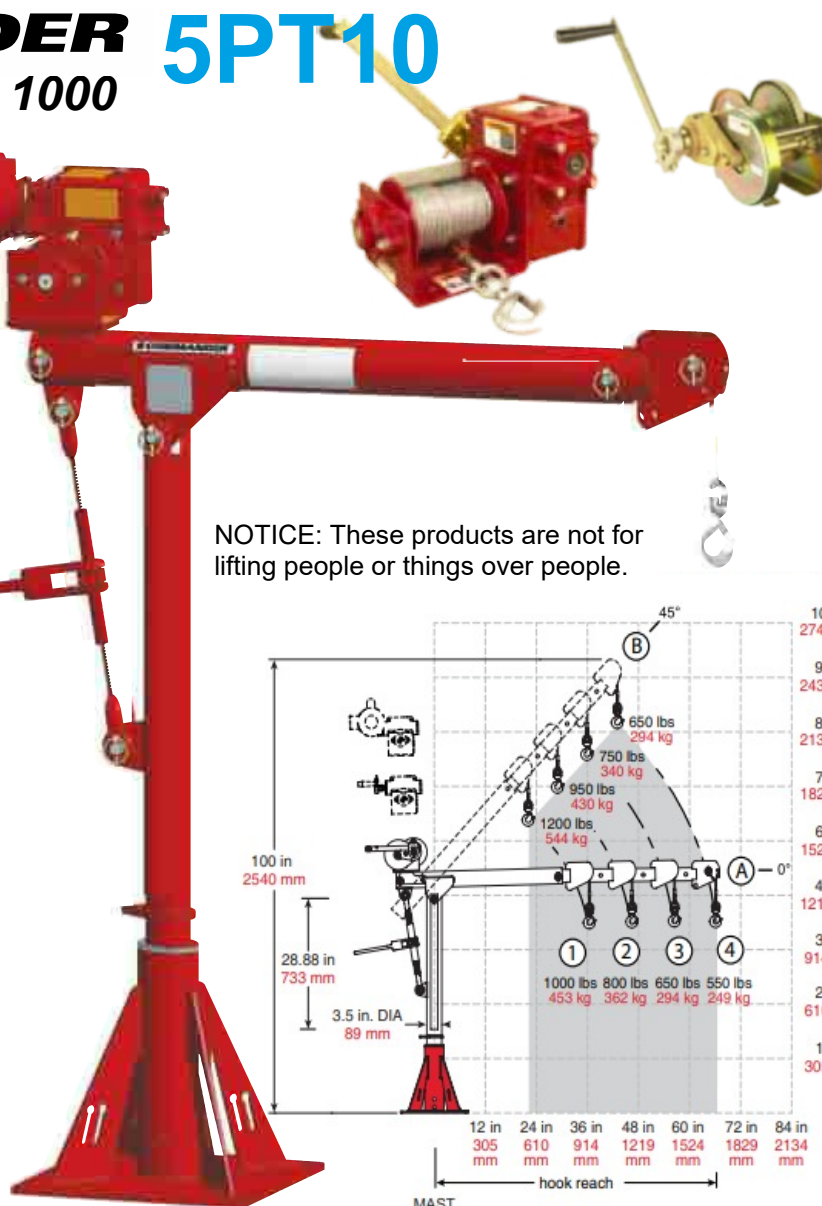
### **EASY ASSEMBLY**

**/DISASSEMBLY** Quick-release clevis style stainless steel pins allow for easy assembly and quick disassembly for transport or storage. No tools required.

### **QUICK DISCONNECT ANCHOR**

For quickly attaching or removing wire rope equipped with a swaged ball fitting - Allows the operator to leave the wire rope attached to the load at all times and simply remove the rope from the winch and attached to the optional wire rope keeper or cable reel.

NOTICE: These products are not for lifting people or things over people.



**VARIETY OF BASES** Pedestal, flush and wall mount bases allow for a variety of mounting solutions and are easily installed to a variety of solid surfaces with anchor bolts or other fastening methods. Bases sold separately.



### **2-YEAR WARRANTY**

Industry-leading two-year limited warranty on all Thern products.



**dlhonline.co.uk**

**0161 223 1990**



# DLHONLINE Lifting Davits

## **THERN 5PT20**

### **COMMANDER**

## UP TO 907 KG 2000 CAPACITY

### Manual or Power Winch

Thern davit cranes can be configured with a manual winch for short, infrequent lifts or a power winch for longer lifts or heavier loads. Choose from Thern's spur or worm gear hand winches or power winches with 230/1/50 as standard. Other voltages available as well as pneumatic, hydraulic or DC Volt power operation.

### CORROSION RESISTANT FINISH

Electrostatic powder coated crane and stainless steel fasteners combine to resist corrosion in harsh environments. Other options available include: galvanized, stainless steel and epoxy finishes.

### QUICK DISCONNECT ANCHOR

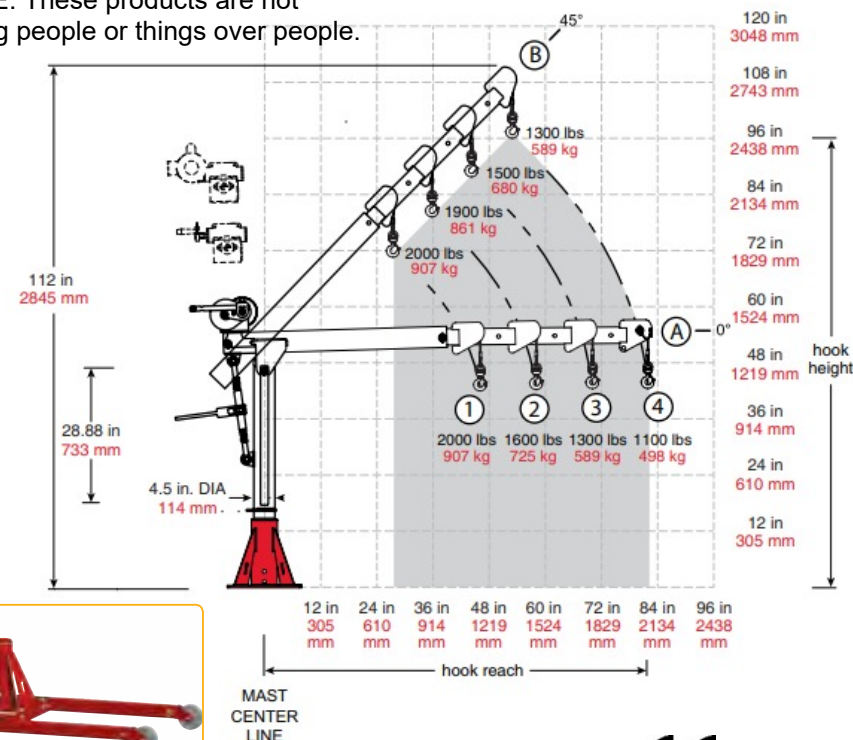
For quickly attaching or removing wire rope equipped with a swaged ball fitting - Allows the operator to leave the wire rope attached to the load at all times and simply remove the rope from the winch and attached to the optional wire rope keeper or cable reel.

### EASY ASSEMBLY /DISASSEMBLY

Quick-release clevis style stainless steel pins allow for easy assembly and quick disassembly for transport or storage. No tools required.



NOTICE: These products are not for lifting people or things over people.



### VARIETY OF BASES

Pedestal, flush and wall mount bases allow for a variety of mounting solutions and are easily installed to a variety of solid surfaces. Bases sold separately.



### 2-YEAR WARRANTY

Industry-leading two-year limited warranty on all Thern products.

**CE** ISO  
9001:2008  
REGISTERED

**dlhonline.co.uk**

**0161 223 1990**



# DLHONLINE Lifting Davits



## 5PT30

Handling large loads up to 1363 kg, with an adjustable boom for high lifts and 2.8 metres of reach, and can still be disassembled for relocation by 2 people.

3000

**MANUAL OR POWER** operation The Admiral 5PT30 model can be a hand or power winch operation. Thern davit cranes can be configured with a manual winch for short, infrequent lifts or a power winch for longer lifts or heavier loads. Choose from Thern's spur or worm gear hand winches or power winches with 230/1/50V

AC electric in any voltage. DC electric, hydraulic and pneumatic power winches are available. Contact us,

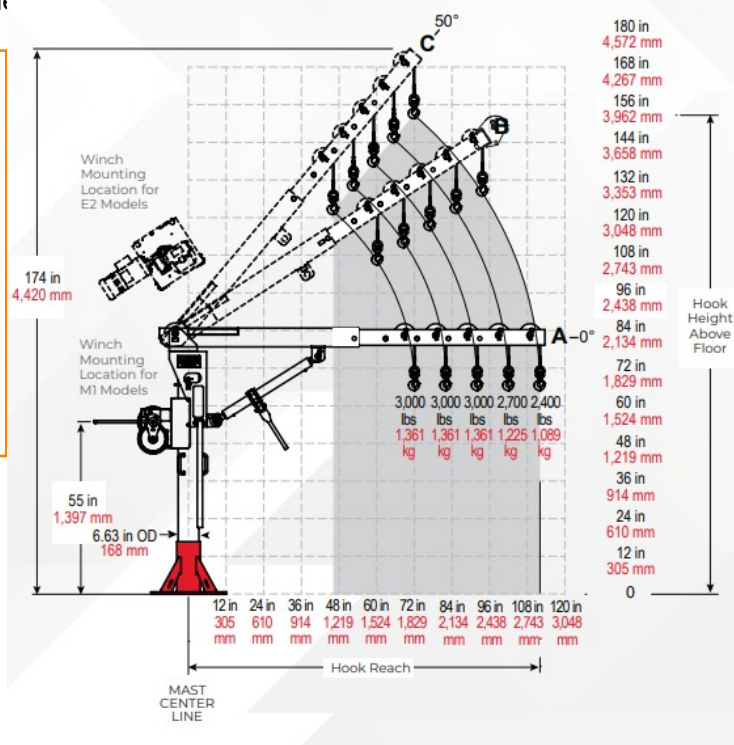
**360 DEGREE ROTATION** The crane rotates 360 degrees on a tapered roller and needle bearings and locks in 12 positions. A handle on the mast provides for easy rotation.

**TELESCOPIC BOOM** The adjustable boom telescopes to five different lengths to adjust the height and reach. A boom brace comes standard and holds the boom in a fixed position during operation.

**EASY ADJUSTABLE BOOM** An adjustable boom angle option allows for 50 degrees of movement with hand-operated ratchet-style

**Customisation**  
(Contact us for details) is available for almost all Thern products

**Longer Lift Distances**  
Customised winch and crane configurations to accommodate longer lifts.



## VARIETY OF BASES

Pedestal, flush and wall mount bases allow for a variety of mounting solutions and are easily installed to a variety of solid surfaces. Bases sold separately.

ISO  
9001:2008  
REGISTERED



## 2-YEAR WARRANTY

Industry-leading two-year limited warranty on all Thern products.



**NOTICE:** These products are not for lifting people or things over people.

**dlhonline.co.uk 0161 223 1990**

# DLHONLINE Lifting Davits



## 5FT25

### MAXIMUM, STATIONARY LIFTING POWER with Extended Reach

The 5FT25 Captain 2500 stationary davit crane (up to 1270 kg) is designed for some of your heaviest loads.

Permanently installed, it features a telescoping boom to reach, lift, and rotate loads a full 360 degrees smoothly and easily.

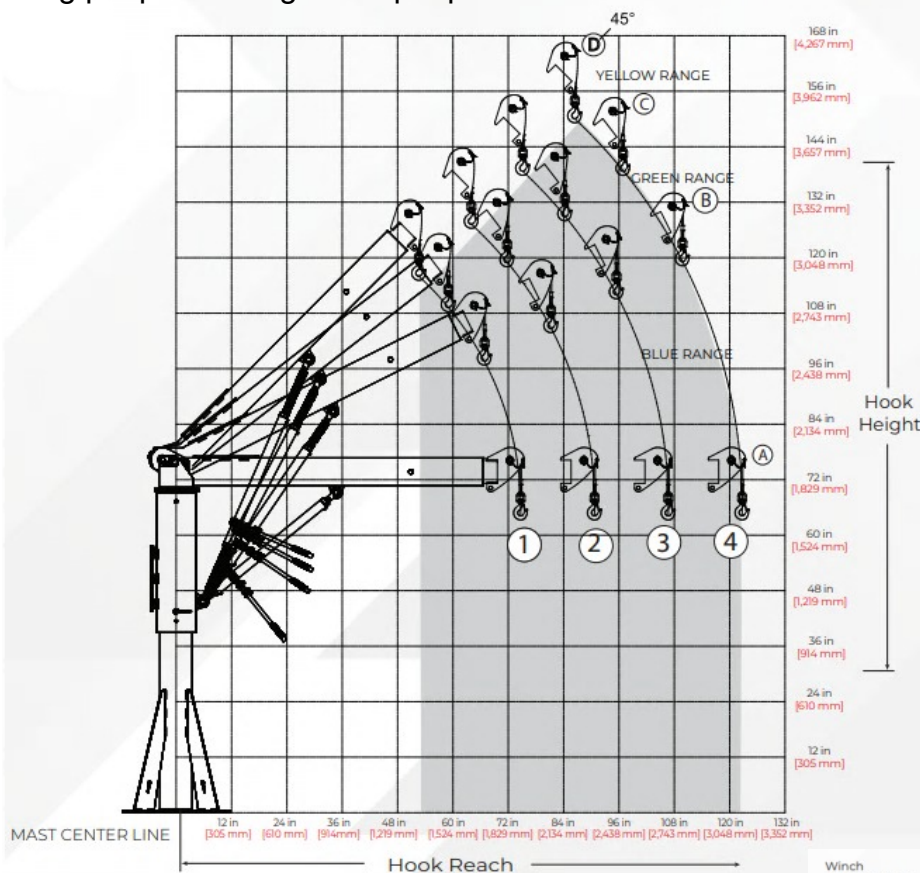
**NOTICE:** These products are not for lifting people or things over people.

2500

A screw jack comes as standard to facilitate boom angle adjustments.

For long or heavy lifts, add a Thern power winch for greater speed.

Red-enamel finish and stainless-steel hardware resist wear in harsh conditions or environments. It is perfect for water/wastewater, manufacturing, marine, construction, and oil and gas applications.



### Durable Construction & Finish

Boom, mast, and base are fabricated from heavy-gauge steel that limits deflection and meets/exceeds ASTM standards

Red-enamel finish and stainless-steel fasteners resist the elements for long service life

Epoxy finishes are available for corrosive environments

ISO  
9001:2008  
REGISTERED



### 2-YEAR WARRANTY

Industry-leading two-year limited warranty on all Thern products.

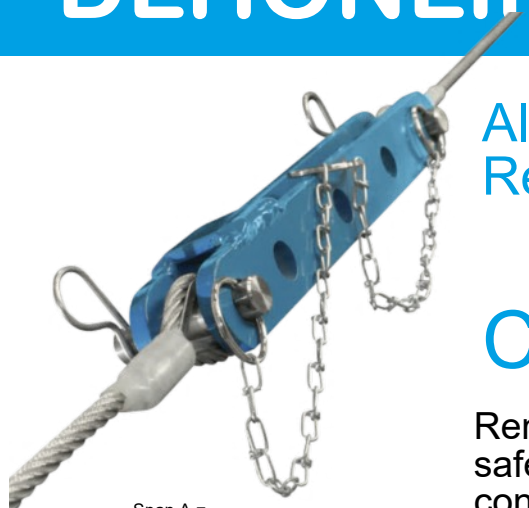


Winch Configurations



**dlhonline.co.uk 0161 223 1990**

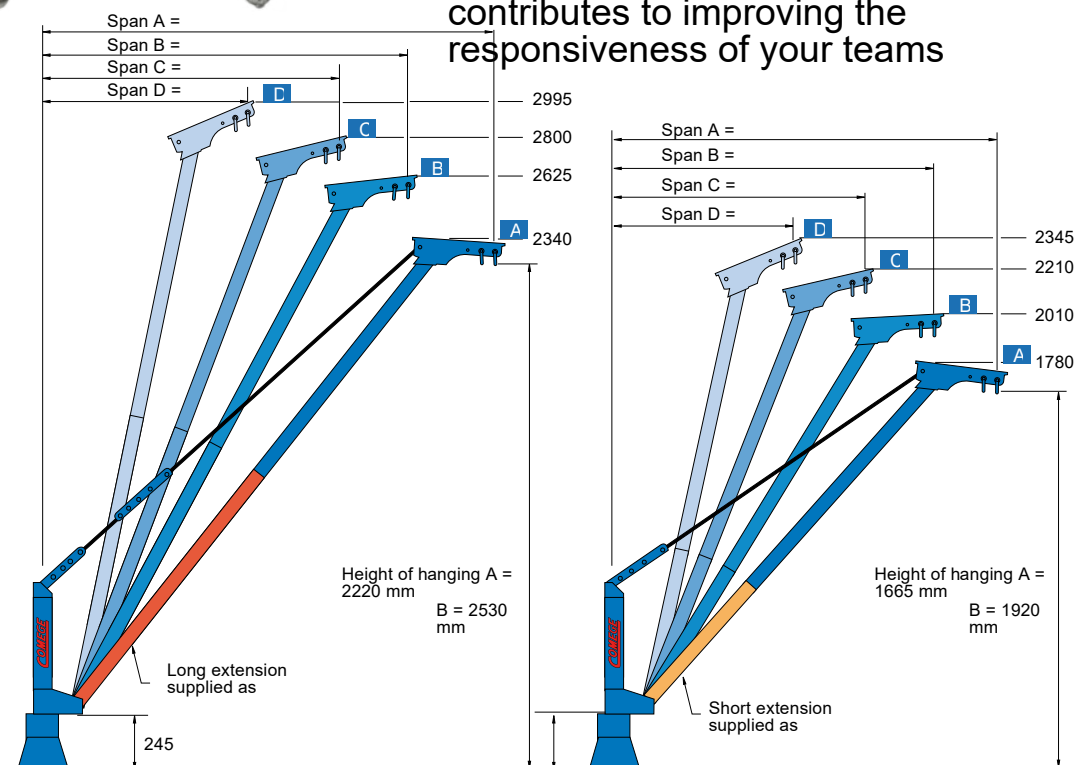
# DLHONLINE Lifting Davits



Aluminium  
Removable lifting davit

## COMALU 300

Removable lifting solution, efficient and safe the COMALU lifting davit contributes to improving the responsiveness of your teams



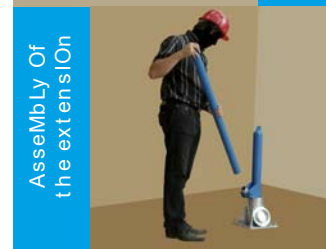
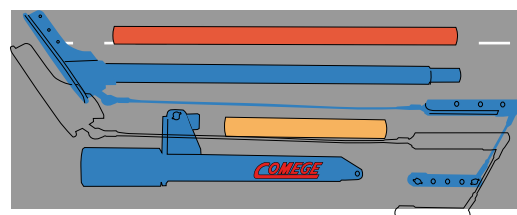
### 1 DAVIT = 2 POSSIBLE METHODS OF ASSEMBLY

#### Standard features

- Reach adjustment 900 mm to 2000 mm
- 2 heights available (2 extensions provided)
- Davit in 3 parts / very fast installation
- Total weight = 24 KG
- All in 1 bag provided
- Davit pivots on ball bearings
- Anodised with powder coating
- 2 stainless shackles for hoist or accessory

#### Options

- Stainless steel drop chain :length 1 metre
- Height extension post
- Socket fixed to the floor, wall, or sealed
- Chain hoist any length

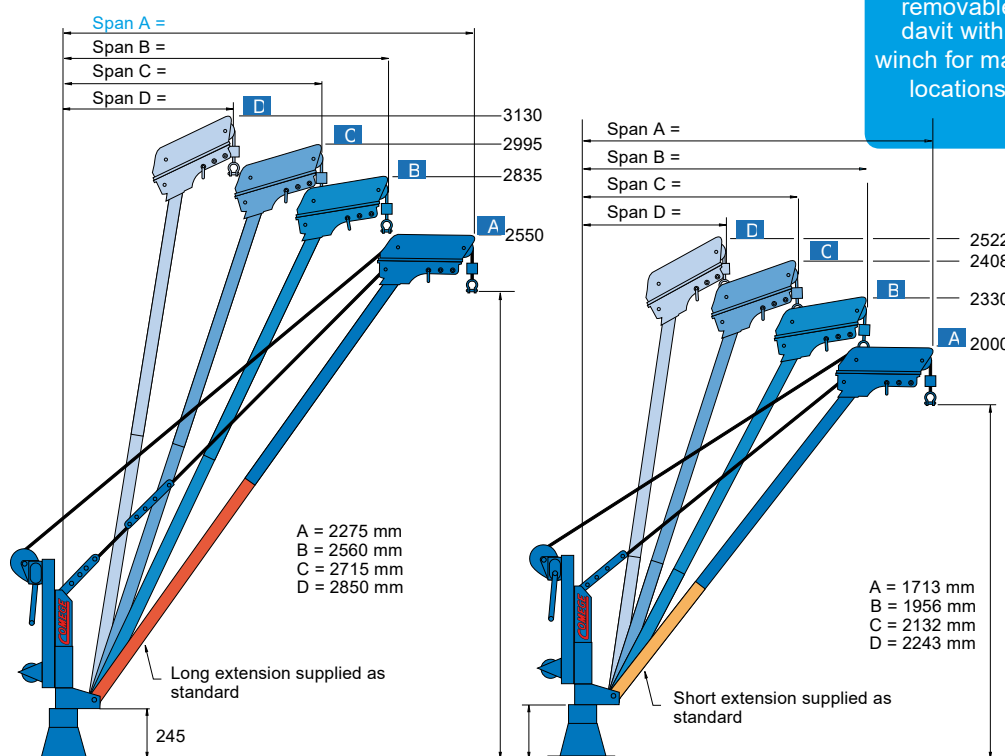




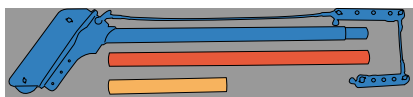
# DLHONLINE Lifting Davits

Operates in standard 8 span-height combinations. It is the ideal lifting davit for lifting loads and people in treatment plant or by the sea, and generally anywhere a standard jib crane can not be used. Secure sockets and enjoy the lightness of a single re-movable lifting davit for many configurations.

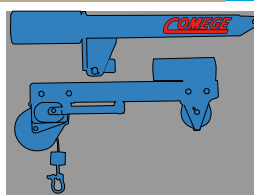
## COMALU 300 T



1 DAVIT = 2 POSSIBLE METHODS OF ASSEMBLY



To minimize the risks due to carrying heavy loads, the components of the COMALU-300T are grouped into two bags robust. A single



Max. capacity  
300 kg

Span 2 m

2 bags

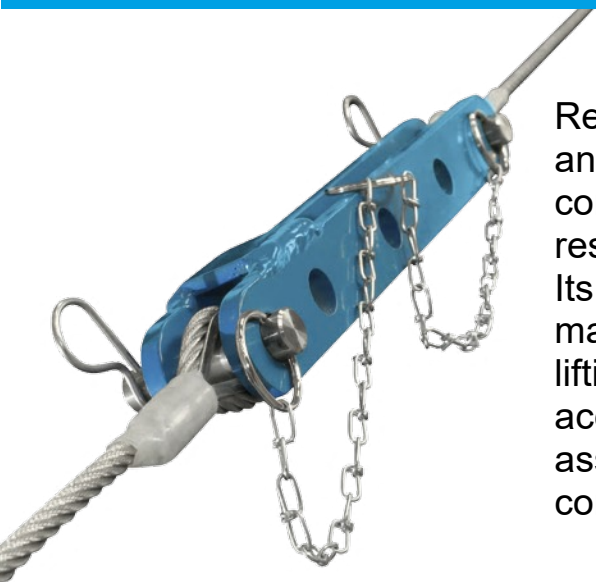
Easy assembly  
A single removable  
davit with  
winch for many  
locations

ARM Assembly

Mounting on the socket

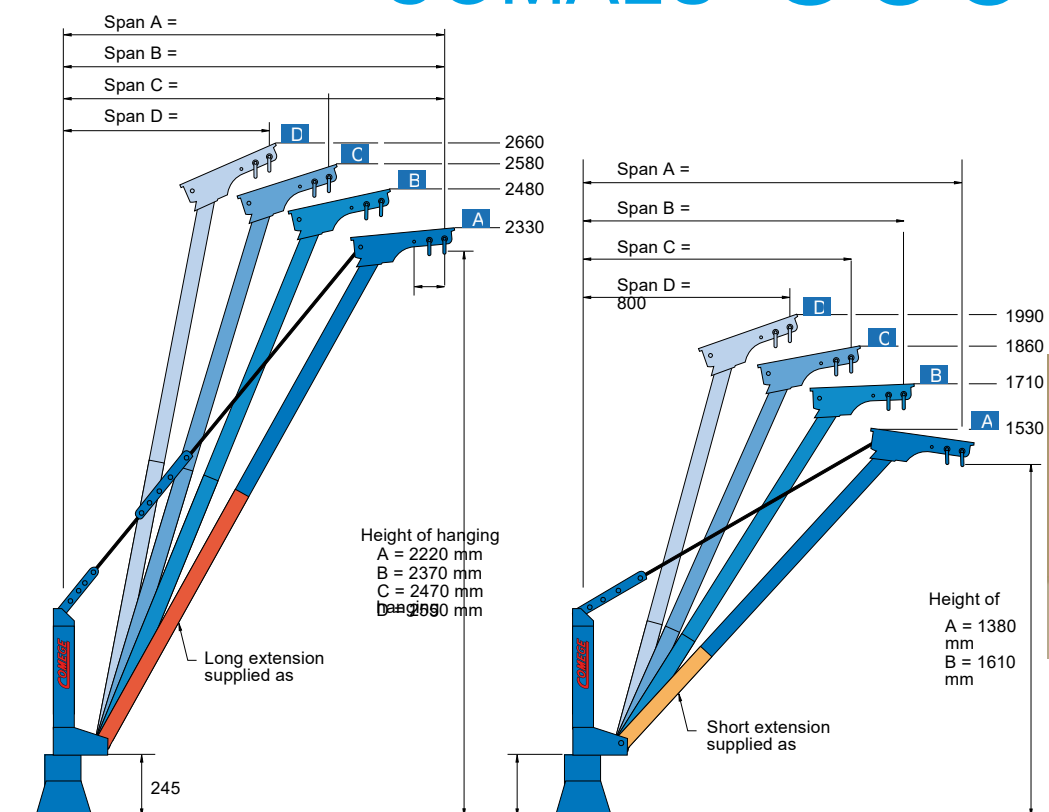
Cable entry

# DLHONLINE Lifting Davits



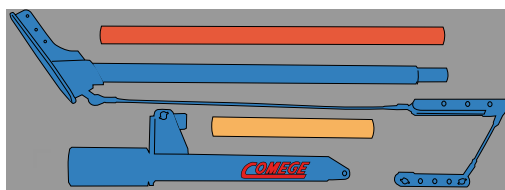
Removable lifting solution, efficient and safe the COMALU lifting davit contributes to improving the responsiveness of your teams. Its aluminium frame guarantee you maximum portability and facilitates lifting operations on sites difficult to access. A single man can safely assemble the 3 elements which comprise the COMALU lifting davit.

## COMALU 500

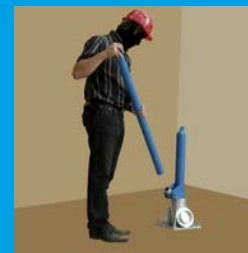


1 JIB CRANE = 2 POSSIBLE

Carry bag (included) gives your team the ideal tool for use on site quickly and efficiently. All the parts that make up the COMALU-300 is grouped into one sturdy bag. A single person can carry the jib crane, assemble, place on the base and make the lift safely.



Assembly of the extension



Mounting on the socket



ARM Assembly



Assemble the hoist to lift

# DLHONLINE Lifting Davits

get in standard 8 span- height combinations. It is the ideal lifting davit for lifting loads and people in treatment plant or by the sea, and generally anywhere a standard jib crane can not be used. Secure sockets and enjoy the lightness of a single re-movable lifting davit for many configurations.



Max. capacity  
500 kg

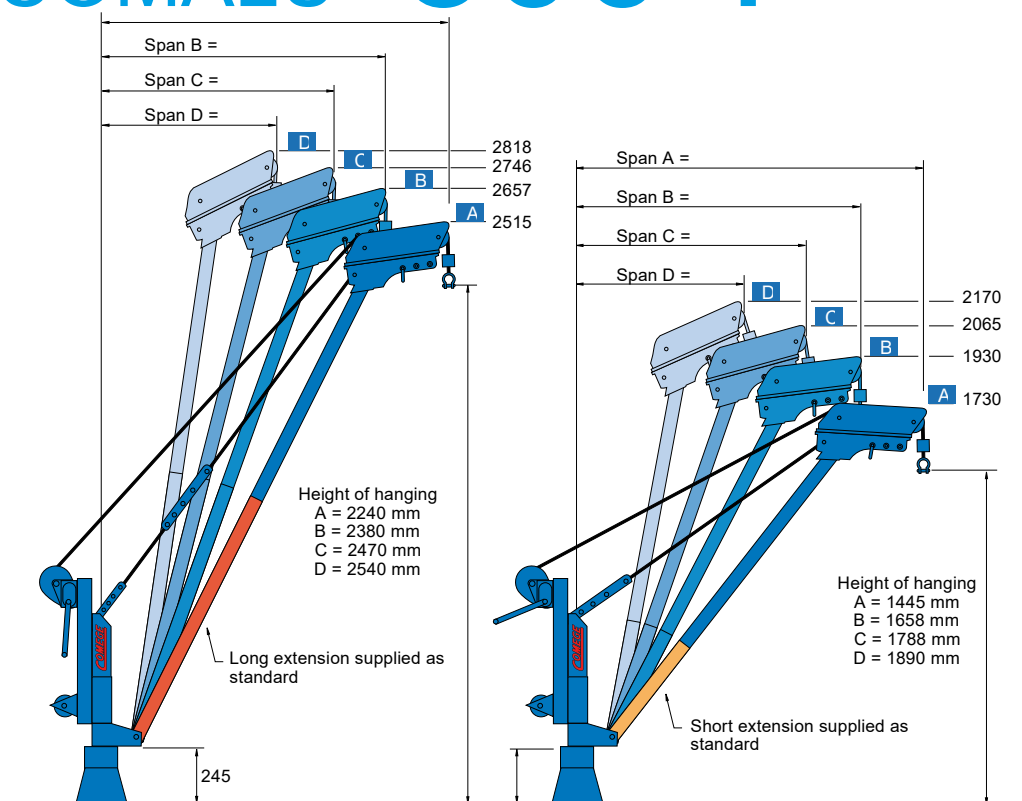
Span 1,5 m

2 bags

Easy assembly

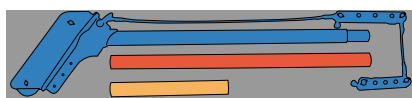
A single  
removable jib  
crane with  
winch for many  
locations

## COMALU 500 T



1 DAVIT = 2 POSSIBLE METHODS OF ASSEMBLY

**Davit with winch = 2 bags of less than 24Kg**



to minimize the risks due to carrying heavy loads, the components of the COMALU-300T are grouped into two bags robust. A single person can carry the jib crane, assemble on the socket and make the lift safely.



MOUnting On the



ARM



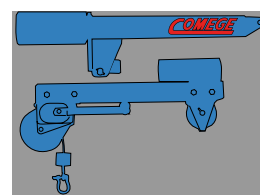
f ixAt ion w lt



CABLe ent



MAke Lift ing



**dlhonline.co.uk**

**0161 223 1990**

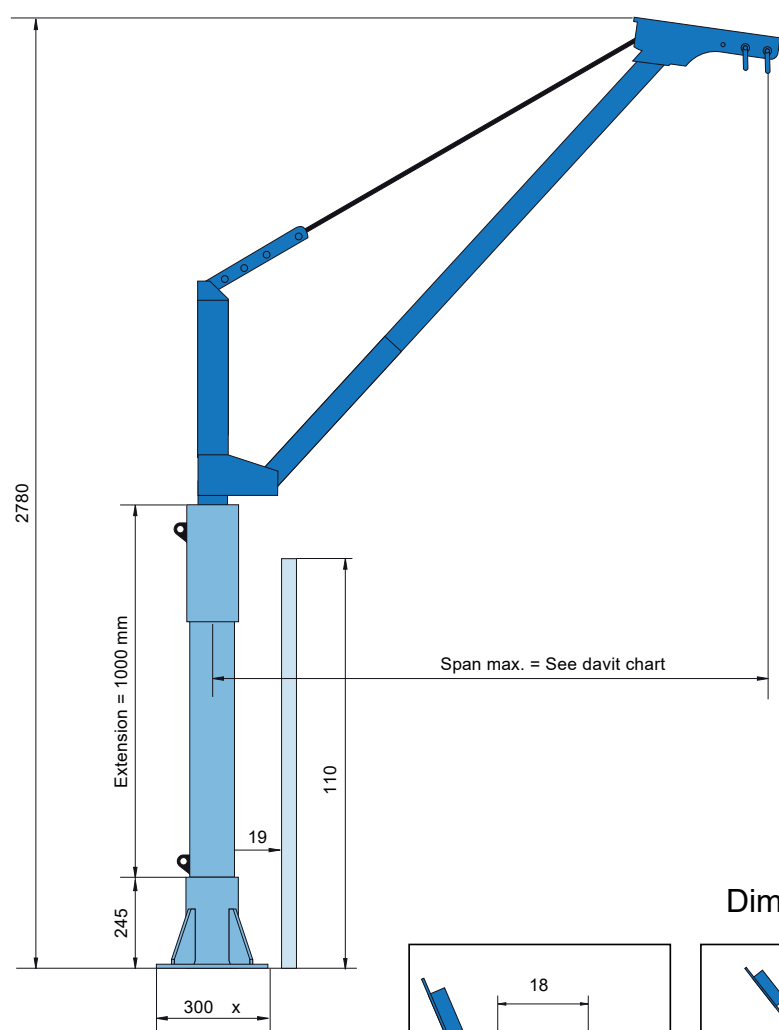


# DLHONLINE Lifting Davits

## Comalu Accessories SOCKETS and EXTENSIONS



### Mounting example: low version 300 + extension



## Sockets

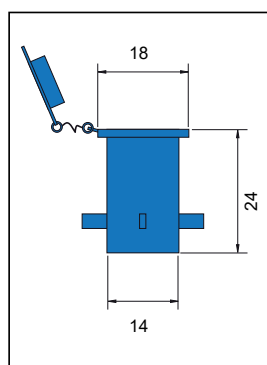
To meet all your mounting configurations, we offer a range of accessories to facilitate the use of our aluminium davits on your sites. the use of several sockets for the same davit greatly enhances handling costs.

A post extension allows the davit to clear the guardrail or increase the lift height.

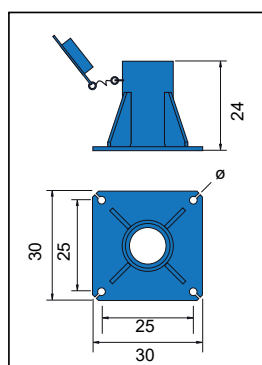
It is for the user to ensure the proper anchoring and quality of the support of the socket before any use of lifting davit



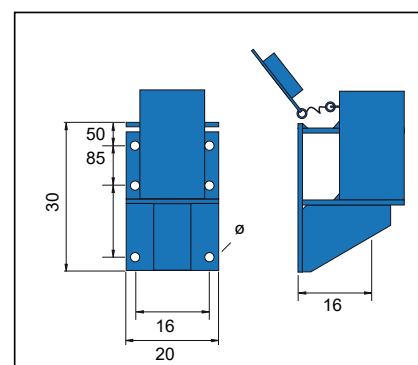
### Dimensions in cm



Cast in



Pedestal



Wall or side mounted

# DLHONLINE Lifting Davits

## UNI-LIFT Davit - Lightweight Aluminium Goods and Rescue Davit

### Features:

A smooth 360-degree rotation, even under maximum load. Adjustable height/reach settings (See next page).

Aluminium construction with a yellow powder coat finish. Each piece weighs less than 25 kg.

Designed to be used in close proximity to hand-railing without any need for adaptation or extension pieces.

Manufactured in lightweight aluminium, the Uni-Lift 500 davit can be easily transported and erected by a single person.

It has no heavy parts or awkward bolts; The two locking and adjustment points on the Uni-Lift 500 contains a sleeved hole for ease of use, allowing the fold-down locking pin to slide in easily.

The Uni-Lift 500 body can be supplied with arms to accommodate:

A) Goods lifting via manual chain block or electric hoist, 500 kg WLL. Suspension holes are 27mm diameter and the width of the plate is 15mm.

B) Goods lifting with a winch, electric or manual, 500 kg WLL

C) Fall arrest/rescue of a single person, 136 kg WLL

Hoists, Winches, and Fall Arrest Equipment sold separately

Manual fall arrest & rescue hand winch complete with 15m wire rope conforming to EN1496, 136kg WLL, supplied with bracket system and adaptor plate to allow attachment to the Uni-lift 500 davit arm (to suit option C)

system and adaptor plate to allow attachment to the Uni-lift 500 davit arm (to suit option C)

Manual goods lifting winch, 500kg WLL, zinc plated finish, supplied with 10 metres of galvanised wire rope terminating with a hook and safety catch, supplied with bracket system and adaptor plate to allow attachment to the Uni-lift 500 davit arm (to suit option B).

Manual and Electric hoists A) Options

The Uni-Lift 500 lightweight aluminium portable lifting davit has a 500 kg WLL.

A two piece design supplied with industry standard 65 mm Universal davit pin to suit standard sockets.

This can be supplied with non-standard pins subject to customer requirements.

### Sockets in galvanised steel

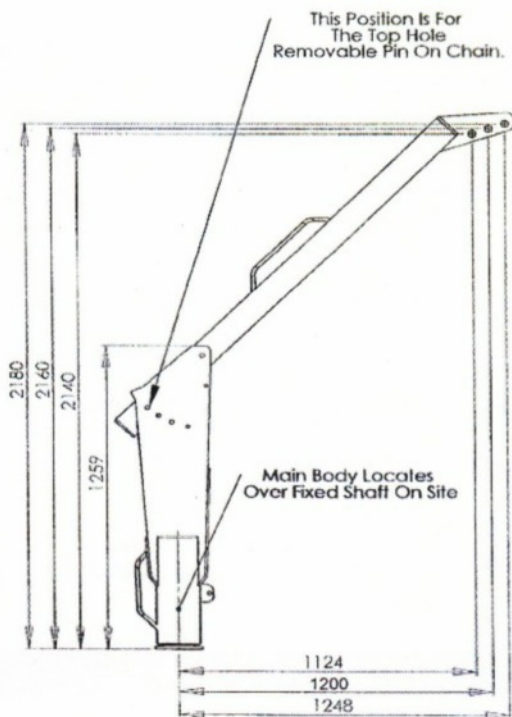
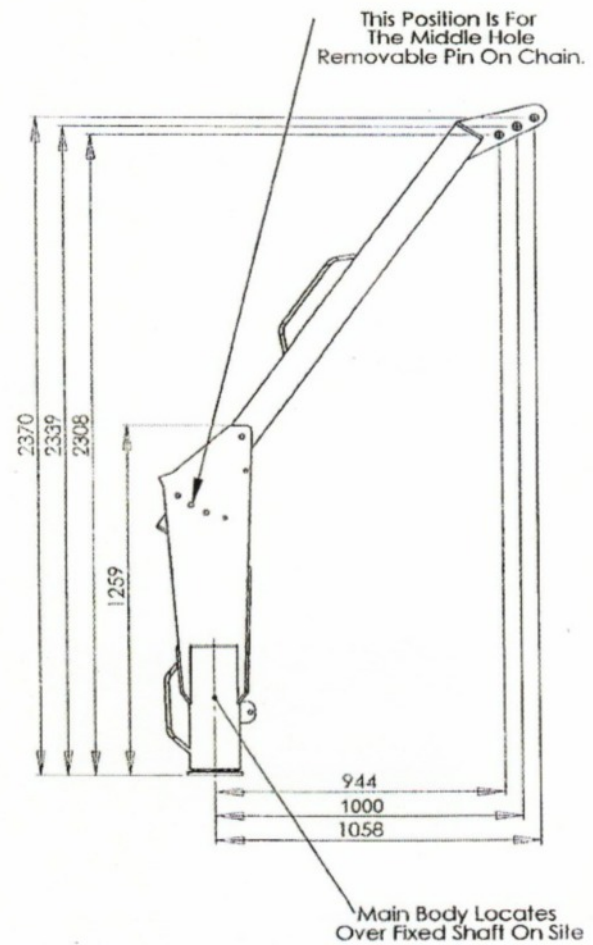
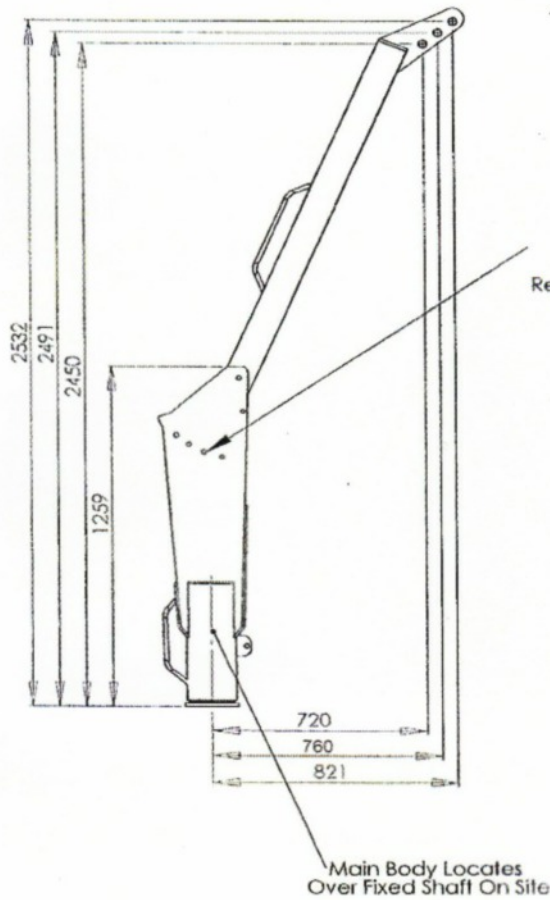
Surface mounted (Pedestal), Cast-in flush sockets or wall mounted sockets are sold separately.



Man riding hand winch to be used for access/egress for a single person lift to lift and lower over a distance of 20 metres, conforming to EN1496 and to the council directive 89/686EEC. Please note a fall arrest retrieval device is to be used in conjunction with the man riding winch to conform to BSEN1496, supplied with bracket

# DLHONLINE Lifting Davits

Dimensions of the variable height and reach of the Easy-Lift 500 Davit





## Custom Made Lifting Davits

### Can't find the right lifting davit for your application?

Even with the most extensive range of lifting davits on the market, our standard models may not meet your exact requirements.

For portable lifting davits, subject to limitations in reach versus self-weight, there is an excellent chance we can provide a lifting davit bespoke to your needs.

**THERN** A large proportion of the lifting davits provided by Thern can be customised to clients exact requirements. To find out whether we can help you, there is an online form for you to complete >



---

### DALE In-house expertise

For more help in designing a specific lifting davit for your application, why not talk to our in-house design team for expert help on 0161 223 1990

For example, this bespoke davit arm is a bolt-on (Machine mounted) 180 degree slewing davit arm which is fitted with a manual hand winch and a special load attachment bracket.



It was specifically developed by Dale for motor removal and maintenance on large newspaper printing presses.

The motors are side mounted in close series to the machine face. Following discussions with the client, the Dale design department developed a working prototype which was portable and able to be positioned to work in an extremely confined space, in between pairs of motors.

Successful trials have resulted in the lifting arm being provided with each new press for on-site maintenance.

Dales' have extensive experience in providing cost effective solutions to handling problems - Call our design team to discuss your requirements.

## Instructions for the Safe Use of Lifting Davits

This document is issued in accordance with the requirements of Section 6 of the Health and Safety at Work Act 1974, amended March 1988. It outlines the care and safe use of Lifting Davits and is based on Section 14 of the LEEA Code of Practice for the Safe Use of Lifting Equipment.

This information is of a general nature only covering the main points for the safe use of lifting davits. It may be necessary to supplement this information for specific applications. Always read and understand the manufacturers operating instructions before use.

### ALWAYS

- Store and handle the lifting davits correctly
- Inspect the lifting davit, hoist or winch and accessories before use and before placing into storage
- Position the Jib arm so that the lifting appliance is directly over the load
- Take the weight of the load gently
- Ensure the travel path is clear before moving the lifting davit arm
- Push rather than pull the load when slewing the davit arm

### NEVER

- Shock or side load the lifting davit
- Attempt to drag loads along the ground
- Allow persons to pass under suspended loads
- Place ladders or climb on unrestrained davit arms

### Selecting the Correct Lifting Davit

Lifting Davits are available in a range of capacities, sizes and design options. Select the lifting davit to be used and plan the lift taking the following into account:

- Type of Lifting davit – over braced, under braced, floor/wall/column mounted – capacity – height and length.
- Slew – angle of slew, 360°, 180° or other – push/pull, hand geared or power slewing.
- Type of hoist or winch to be used.
- The need for slewing stops.

### Storing and Handling Lifting Davits

Before moving the davit check the manufacturers information on safe use and the weight of sections. If in excess of 25 kg enlist assistance for a two man lift or crane.

When not in use lifting davits should be positioned so as not to present a hazard to persons, goods, vehicles etc that may be in the area. It may be necessary to secure the davit arm to prevent movement taking place as the result of winds etc.

If the lifting davit is not in regular use it is advisable to remove the lifting appliance for separate storage. Where this is not possible or desirable the appliance should be parked where it will not present a hazard may cause the davit arm to whip.

## Instructions for the Safe Use of Lifting Davits

### *Installing and Commissioning*

Follow the specific instructions for erection issued by the manufacturer, these may vary with the design.

The overall stability and safety of the lifting davit depends on its foundation or supports. When erecting to an existing structure it is important that the superimposed forces are assessed by a qualified engineer and written approval obtained.

Similarly free standing lifting davits must be mounted onto a suitable foundation and a suitably qualified person should be consulted. In the case of lifting davits clamped to upright structural members, steps must be taken to prevent the clamp fixings sliding downwards.

**Special Note** - To comply with statutory regulations and manufacturers installation instructions each socket fixing will require proof load testing after installation and before being taken into use. Subject to location we can undertake this work and provide a report of proof test. Please contact us for a quotation

### *Using Lifting Davits Safely*

Do not use defective lifting davits, hoist, winches or accessories.

Position the jib arm carefully. The hoist or winch hook must be directly over the centre of gravity of the load. Do not use the davit arm or appliance to drag loads along.

Take the load gently and avoid shock loads. Similar care is needed when lowering loads as sudden loading/unloading may cause the jib arm to whip.

Before moving the davit arm or suspended load ensure you have a clear view of the travel path and that this is free of any obstructions etc.

Avoid swinging loads. Push rather than pull on suspended loads. Do not let trolleys crash unto the travel stops as the load may whip outward thus increasing the effective radius and therefore the resultant loads imposed on the mechanisms and structure.

### *In-Service Inspection and Maintenance*

The maintenance requirements may be combined with those of the lifting appliance.

Lubricate bearing and pivot points. Where the slewing motions is obtained by manual gears or powered drive the gear wheels and drives must be kept in good order and lubricated.

Bolts and fixings should be checked to ensure they are tight and if necessary re-torqued.

The running surface of the track should be clean and kept free of debris etc.

Regularly inspect the lifting davit and in the event of the following defects refer the lifting davit to a competent person for thorough examination: Structural defects; damage; distortion or cracked welds; loose or missing bolts; damaged or missing runway end stops; difficulty in slewing or the davit arm slews on its own; any other visible defects or operational difficulties.

For further information on associated lifting equipment please refer to the manufacturers instructions or see the Code of Practice for the Safe use of Lifting Equipment published by the Lifting Equipment Engineers Association.



# DLHONLINE Lifting Davits

## Accessories for use with your lifting davits

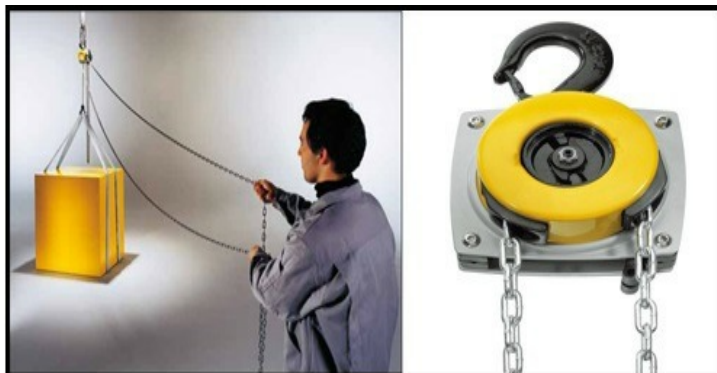
### Hoists

#### Manual

There are numerous manually operated rated chain hoists available for use with lifting davits.

One model we particularly recommend is the **YALE LIFT 360** which has a rotating hand chain wheel which can be operated from any angle. This is particularly useful if the davit is to be swung out over a void. This model can also be provided in corrosion resistant finishes.

For more information on manual hoists >



#### Electric



If the lifting davit is being deployed for very high lifts or prolonged use, then a powered hoist may prove time saving and less arduous. Low voltage hoists are available for outside locations.



### Winches

#### Hand operated



Some lifting davits are specifically designed and supplied with manual winches. These are often more easier to operate than hoist suspended davits as the winch is mounted on the davit post. Where longer lifts are required some manual winches can be drill drivable.



#### Electrically operated



For more arduous tasks or very high lifts an electrically powered winch may be more suitable. These are available in low voltage for on site applications



# DLHONLINE Lifting Davits

## Accessories for use with your lifting davits

### Pump lifting

#### Chains



Pump lifting chains are commonly used with lifting davits and are available with in steel, galvanised and stainless steel. These can be provided in numerous configurations and fittings to suit any application.



#### Lifting Shackles

Lifting shackles for suspension and load attachment are readily available in galvanised and stainless steel.



#### Lifting points

Bolted lifting points are supplied with numerous configurations in galvanised or stainless steel for load attachment.



Weldable lifting points are available in alloy steel and stainless steel.

#### Wire Rope

Wire rope for winches and wire rope slings can be specified for use with your Lifting davit. For more information please contact our sales team for more information.



For pump lifting or similar applications, THERN Lifting davit manufacturers offer a range of wire rope options in galvanised and stainless steel. Together with a range of accessories including Rope winders, keeper plates and tension weights



# DLHONLINE Lifting Davits



## About us

As a leading supplier in the world of dynamic lifting and handling DLH online offer a wide range of products and provide a full range of quality services: from design to completion of your projects and commissioning to the maintenance of your handling equipment.

With excellent aftercare service, DLH Online provide value for money and ensures the safety of your workplace, whilst maintaining the readiness and benefits of your handling equipment throughout its lifetime.

As part of the DALE Group, DLH online is committed to satisfy its customers by providing long term advice and assistance on all your projects.

We provide solutions in all industry sectors:

aerospace, automotive, beverage, chemical, engineering, food, logistics, manufacturing, pharmaceutical, marine, transportation...

We take immense pride in providing professional, efficient and reliable services that exceed the expectations of our customers – giving them exactly what is promised. Taking the stress out of lifting and handling and its regulations.

The range of solutions available have been carefully chosen and offer proven technology that really works for the user. Thereby ensuring that employers and operatives alike will benefit both in economy and ease of use. In addition to in-house design and manufacturing facilities,



## DALE GROUP

As the North West of England's longest established supplier of lifting and handling equipment (Established since 1830) and a member of the Lifting Equipment Engineers Association, we bring with us an enviable reputation for quality and service. Together with a unique accumulation of skills, knowledge and experience.

## Contact Us



**Dale Lifting and Handling Specialists**  
2 Kelbrook Road, Manchester M11 2 QA

**Telephone: +44 (0) 161 223 1990**

**Facsimile: +44 (0) 161 223 6767**

**Email: [sales@dale-lifting.co.uk](mailto:sales@dale-lifting.co.uk)**

**Main website: [www.dlhonline.co.uk](http://www.dlhonline.co.uk)**

**For more details on all the lifting davits shown in this guide  
and to request a quotation [CLICK HERE](#)**

**dlhonline.co.uk 0161 223 1990**



[illegible]