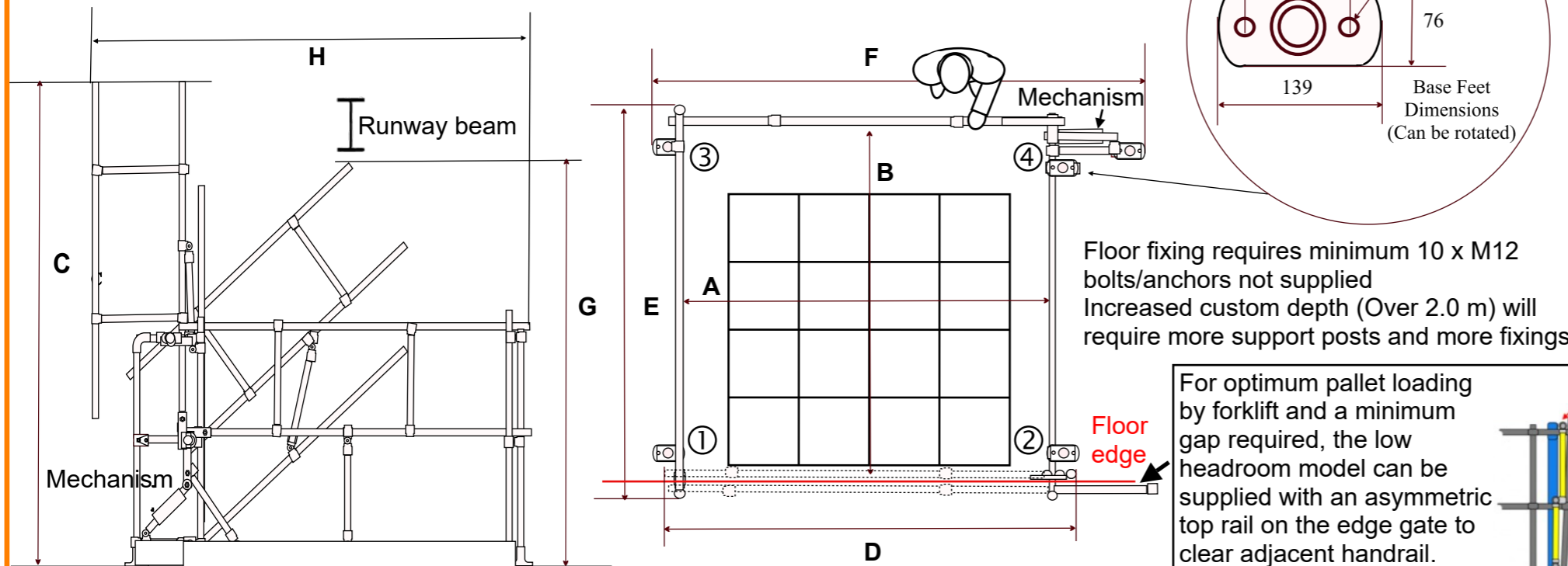


Low Headroom Hi-Gate Open Top Multi-Purpose Safety Pallet Gate



Mechanism can be positioned in any corner (1) to (4) to suit location and loading requirements

Floor fixing requires minimum 10 x M12 bolts/anchors not supplied
Increased custom depth (Over 2.0 m) will require more support posts and more fixings

For optimum pallet loading by forklift and a minimum gap required, the low headroom model can be supplied with an asymmetric top rail on the edge gate to clear adjacent handrail. To have this option the mechanism must be in corner (3) operators right or (4) operators left.

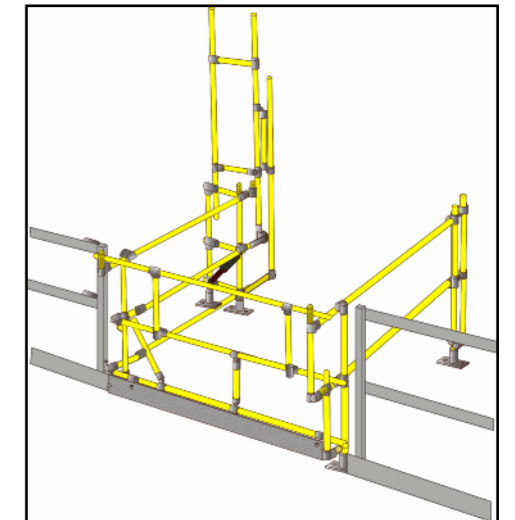


Features

- Open top for tall loads - Can be loaded by forklift or overhead hoist
- Built in the UK
- Mechanical construction system
- Standard and Custom sizes
- Anti-slam damper
- Aluminium kick plate (Toe board) prevents material from accidentally being pushed from an elevated space to a lower level
- Available in weather resistant all galvanised or with optional yellow thermoplastic coated gates for higher visibility.
- Free-standing - simple bolt to deck installation - Shipped with main sections pre-assembled for simple installation

Benefits

- Protects all personnel by providing fall protection at all times on walking-working surfaces. This includes any surface higher than 500 mm above the ground level
- No-weld assembly of components eliminates the need for hot works permits and site shutdowns to deliver a safer, quicker set-up and installation with little or no damage to finish
- Modular flexibility - Modular system design adapts to on-site conditions with the flexibility to retrofit, replace broken sections or can be disassembled for repositioning when required



Model	A	B	C	D	E	F	G	H
Hi-Gate Low Headroom 1.5m W x 1.5m D	1500 mm	1500 mm	2350 mm	1950 mm	1880 mm	2200 mm	2250 mm	2350 mm
Hi-Gate Low Headroom 1.5m W x 2.0m D	1500 mm	2000 mm	2350 mm	1950 mm	2380 mm	2200 mm	2250 mm	2350 mm
Hi-Gate Low Headroom 2.0m W x 1.5m D	2000 mm	1500 mm	2850 mm	2450 mm	1880 mm	2700 mm	2750 mm	2850 mm
Hi-Gate Low Headroom 2.0m W x 2.0m D	2000 mm	2000 mm	2850 mm	2450 mm	2380 mm	2700 mm	2750 mm	2850 mm
Hi-Gate Custom size	inside width custom up to a maximum 2000 mm	inside depth custom up to a maximum 4000 mm	Height open gate A + 850 mm	Minimum Edge Gap = A + 450 mm	Overall depth B + 380 mm	Overall width inc. Mechanism = A + 700 mm	Runway beam height A + 750 mm	= A + 850 mm

Dimensions are approximate only. Due to differences in the tube clamps and the assembly process, the actual dimensions may vary slightly. Any critical dimensions such as hole fixing centres should be determined when the product is actually on your site.

Mezzbarriers product information herein is provided as a general reference only regarding the use of the applicable products. The specifications stated here maybe subject to change. — www.dlhonline.co.uk/by-brand/mezzbarriers-safety-pallet-gates

SPECIFICATION - Hi-Gate Low Headroom mezzanine safety gate

- Mechanical construction with all replaceable parts.
- Galvanised steel tubing to EN 10255. 33.7 mm diameter tube x 3.2 mm wall thickness. Side frames 42.4 mm diameter x 3.2 mm wall thickness. Galvanised to BS EN ISO 1461.
- Optional additional thermoplastic tube coating: Plas Coat PPA 571 ES. - RAL colour 1021 Alert safety yellow
- To reduce operator fatigue some wider gates may include Aluminium grade 6063 T6 - 33.7 mm diameter tube x 3.2 mm wall thickness
- Anti-slam damper painted finish.
- Kick plate 100 mm x 3 mm Aluminium grade 6063 T6.
- All tube clamps standard cast steel galvanised to BS EN ISO 1461.
- All clamps grub screws are stainless steel to ensure minimal maintenance.
- Special heavy duty bolted fitting Zinc sprayed
- Handrail height of Hi-Gate is 1100 mm. Gap between top, knee rail and bottom guardrail 466 mm. Guardrail centre to centre 500 mm.
- Testing 300 N/m applied to the top rail and knee rail of the pallet edge gate in accordance with EN ISO 14122-3:2016. Deflection not exceeding 3% of handrail height.
- Installation, safe use and maintenance instructions provided. Requires M12 floor fixings (Not included)